

SALT CREEK RURAL PARK DISTRICT 2024

SPRING & SUMMER

*A fun place
to play!*



Registration Begins February 1

SPRING & SUMMER FUN...



Twin Lakes is the perfect place to be. Enjoy a variety of amenities that include: a 9-hole golf course, aqua driving range, volleyball courts, playground, paddle boating, fishing, walking path, and more! Don't forget to stop inside the Clubhouse and grab a bite to eat or drink at RoccoVino's starting in April.

Golf course and driving range open on April 1.
Paddle boating will open on or after May 1.
(weather permitting)



Rose Park is the home for Trinity Irish Dance.

For class information, please contact info@trinityirishdance.com or visit our website trinityirishdance.com for more information.

Want to book a show in March 2024?
Email booking@trinityirishdance.com.

MEET OUR NEW STAFF MEMBERS

Jody Dodson

Superintendent of Recreation

Jody recently joined Salt Creek Park District for the second time in her career. She graduated from Illinois State University with her degree in Parks and Recreation in 2000 and started her career at Salt Creek from 2000-2007 as the Recreation Supervisor. She then went on to work for Hoffman Estates Park District (12 years) and Barrington Park District (3 years). She has programed for youth, senior, special events, dance, gymnastics, karate, ski club and summer camp. Jody grew up and still lives in Palatine with her two children, Riley and Logan. She enjoys baking and spending time with her family and friends.



Vince Loverher

Recreation Supervisor

Vince has 12 years of programming experience in residential camp, day camp as well as afterschool programming. He has worked in the nonprofit sector for the last five years in Houston, TX, but decided to come back to the community where he grew up. He currently lives in Arlington Heights with his wife and two dogs. He enjoys the outdoors, camping and cooking!



Alessandro Moraca

General Manager,
Salt Creek Sports Center

Alessandro previously worked for the Des Plaines Park District, Itasca Park District, and the City of Elgin. Outside of work, he is an avid sports enthusiast, enjoying activities such as hockey, golf, and basketball. He lives in Elgin and loves spending quality time with his cat, Nicco.



Welcome to Salt Creek Park District!

SALT CREEK PARK DISTRICT

It is the mission of the Salt Creek Rural Park District to provide for the community a quality park and recreation system that is committed to excellence in service and facilities, as well as being sensitive to individual and economics.

LETTER FROM THE BOARD OF COMMISSIONERS

What makes Salt Creek Park District a "Fun Place to Play?"

- Waterfront Activities
- Free Music Nights on the Patio
- New Aquathon Event at Twin Lakes
- Special Events throughout the Year

We may be small, but we have many amazing facilities to enjoy all kinds of recreational activities that are crucial to a healthy life! Our staff is committed to our mission and focus on providing events and programs that fit the needs of our community.

It is the goal of Salt Creek Park District to improve the quality of life for you and your family and we look forward to serving our constituents with integrity and passion for our district! Spring is the perfect time to UNPLUG and PLAY! So, put down your devices and pick up a new hobby! Join a new program, try out a fitness class, or simply enjoy one of our beautiful outdoor parks!

If you live within the boundaries of Salt Creek, you can review the Reciprocal Agreements with the surrounding districts on page 41 of this brochure as well as our relationship with Northwest Special Recreation Association (NWSRA), who provides specialized services for individuals with disabilities.

Visit saltcreekpd.com and join our E-news family or follow us on Facebook and Instagram. You'll be sure to hear the latest news on programs and upcoming events that are happening district wide.

We're a Fun Place to Play!

Respectfully,
Salt Creek Board of Commissioners



CHECK OUT OUR SPRING & SUMMER FUN!

Park District Board & Staff	4
General Information	5
Park Policies.....	8
Preschool	9
Early Childhood	10-11
Summer Camps.....	12-13
Youth Programs	14
Youth Athletics	15-16
Karate	17
Adult Programs.....	18-19
Adult Fitness.....	20-21

Adult Trips	22
Art Program	23
Special Events	24-27
Sports Center.....	29
Rental Information.....	30-31
Twin Lakes Golf Course.....	32-33
Twin Lakes Golf Leagues & Classes	34-37
Fishing & Boating	38
Registration	39-40
Reciprocal Agreements.....	41
Park Maps.....	42-43

GENERAL INFORMATION

Board Meetings
are held the
second Tuesday
of each month at
7:00pm.

The Board of Commissioners encourages all residents to attend the Board Meetings for any comments or suggestions regarding the Salt Creek Rural Park District. All board meetings are held at:

Rose Park Administrative Building, 530 South Williams Avenue, Palatine

COMMISSIONERS

The commissioners are available to answer your questions or take your suggestions through the emails listed below or through the park office at 847-259-6890.

Paul Nagel

President
pnagel@saltcreekpd.com

Victoria West

Vice President
vwest@saltcreekpd.com

Pat McGovern

Secretary
pmcgovern@saltcreekpd.com

Michael Reiss

Treasurer
mreiss@saltcreekpd.com

Joe Mazzocchi

Commissioner
jmazzocchi@saltcreekpd.com

Ilene Seligmann

Commissioner
iseligmann@saltcreekpd.com

Tim Stoeckel

Commissioner
tstoeckel@saltcreekpd.com

STAFF

Diane Hilgers, CPRP

Executive Director
dhilgers@saltcreekpd.com

Chris Paisley

Director of Parks and Planning
cpaisley@saltcreekpd.com

Jody Dodson

Superintendent of Recreation
jdodson@saltcreekpd.com

Kelly Smith

Marketing & Community
Outreach Manager
ksmith@saltcreekpd.com

Vince Loverher

Recreation Supervisor
vloverher@saltcreekpd.com

Alessandro Moraca

Sports Center General Manager
amoraca@saltcreekpd.com

Ashley Medley, CPRP

Twin Lakes Facility Manager
amedley@saltcreekpd.com

Cindy Fracassi

Assistant Facility Manager
cfracassi@saltcreekpd.com

Rick Timm

Park Tradesman
rtimm@saltcreekpd.com

Phyllis Newton

Administrative Assistant
pnewton@saltcreekpd.com

Moira Palmer

Superintendent of Finance
mpalmer@saltcreekpd.com

Karen Maniscalco

Customer Service/HR Assistant
kmaniscalco@saltcreekpd.com

Jimmy Zeman

Park Tradesman II
jzeman@saltcreekpd.com



From left to right: Front row: Kelly Smith, Diane Hilgers, Ashley Medley. Second row: Jody Dodson, Cindy Fracassi. Third row: Phyllis Newton, Karen Maniscalco, Moira Palmer. Fourth row: Chris Paisley, Jimmy Zeman, Rick Timm, Vince Loverher, Alessandro Moraca.

GENERAL INFORMATION

OUR VALUE SYSTEM

1. To be stewards of natural resources and the environment and secure land for future generations.
2. Provide the opportunity for a high level of citizen participation through programs and services which are available to all and enhance their quality of life and community.
3. Fully utilize community volunteers, agencies, and governments, private sector enterprises, and individuals to jointly plan, develop, and deliver the desired programs and services to our citizens.
4. Hire, develop, empower, support, and retain an enthusiastic and competent staff that is dedicated to serving citizens' needs in a responsive, efficient, creative and flexible manner using reasonable, available resources.
5. Commit the necessary resources to provide safe and secure parks, facilities, programs and services to our citizens through stable, prudent financial management and comprehensive, long-term planning.
6. Concentrate capital resources on repairing and improving existing parks and facilities to meet the physical standards expected by our citizens.

SALT CREEK PARK DISTRICT LOCATIONS

Rose Park Administrative Office

530 South Williams Avenue
Palatine, IL 60074
847-259-6890
Monday-Friday, 8:30am-5:00pm
saltcreekpd.com

Twin Lakes Recreation Area

1200 East Twin Lakes Drive
Palatine, IL 60074
847-934-6050
saltcreekpd.com

Salt Creek Sports Center

Home of Hat Trick Hockey
647 Consumers Avenue
Palatine, IL 60074
847-394-8806
saltcreeksportscenter.com

Park Maintenance Building

142 Stonington Drive
Palatine, IL 60074

PARK DISTRICT RESIDENTS

Who is a Salt Creek Rural Park District resident?

If your place of residence falls within Park Boundaries, a portion of your or your landlord's real estate taxes goes to that park district. In exchange, you may receive a discounted price for Park District programs or use of facilities.

If you reside in an unincorporated area and pay no Park District taxes, you are considered a non-resident at all Park Districts. Your tax bill and your voter's registration card indicate which, if any, park district receives tax dollars from you. The Salt Creek Park District encompasses the southeast corner of Palatine, a north central portion of Rolling Meadows and a small section in west central Arlington Heights. Please refer to the map on page 43 of this brochure.

Like us on Facebook.
Follow us on Instagram!



The Northwest Special Recreation Association (NWSRA) provides outstanding opportunities through recreation for people with disabilities. Brochures may be picked up at the Park District main office or at the NWSRA office at Park Central, 3000 W. Central Road in Rolling Meadows. If you require assistance or need reasonable accommodation, contact the office.

NWSRA may be contacted at:

- 847-392-2848 (voice)
- 847-392-2855 (TTY)
- 847-392-2870 (fax)

For more details, visit nwsra.org.

SPONSORSHIPS



Guests learned more about a Tesla on the Twin Lakes patio at the Turtle Trek!

THANK YOU TO OUR GENEROUS SPONSORS

Alltech HVAC	Lamp Incorporated
Chicago Blackhawks	Messina & Associates
Chicago White Sox	Orangetheory
Chicago Wolves	Palatine Bank & Trust
Chiro One	Palatine Lions Club
Christopher B. Burke Engineering, Ltd.	Palatine Public Library
Club Pilates Palatine	Precision Freight
Daily Herald	RoccoVino's
Elite Soccer	Rotary Club of Palatine
First Ascent Climbing & Fitness	Tesla Schaumburg
Fracassi Carpentry, Inc.	The Salmon Shop & The Great Outdoors
Hampton Inn - Deer Park Chicago	The Grand at Twin Lakes
H&R Block	The Knobby
Illinois Bone and Joint	Williams Architects
JSD Professional Services, Inc.	Witron

THANK YOU TO OUR PROUD PARTNERS

Arlington Heights Park District	Mt. Prospect Park District
Bach to Rock	Nothing Bundt Cakes - Kildeer
Buffalo Grove Park District	Palatine Park District
CareDiem	River Trails Park District
Des Plaines Park District	Rolling Meadows Park District
Haas Family	Schaumburg Park District
Hoffman Estates Park District	Starbucks
Inspired by Pet	Trader Joe's Palatine
Knuerr Family	Winston Campus Elementary School

Like us on Facebook.
Follow us on Instagram!



SPONSORSHIP OPPORTUNITIES

Support our programs while promoting your business within the community. Contact Kelly Smith at 847-259-6890 or ksmith@saltcreekpd.com.

We appreciate your support!

Become a race sponsor.

Sponsor one or all 3 races.

- Color Run 2K - May 11, 2024
- Aquathon (Swim & Run) - June 23, 2024
- Youth Obstacle Course Race (OCR) - September 2024

For more information, contact Kelly Smith at 847-259-6890 or ksmith@saltcreekpd.com.



Palatine Bank & Trust engaged with the community at many of our races!

VOLUNTEER OPPORTUNITIES

Special Event Volunteers

The Park District utilizes volunteers in many of our programs and special events. You can volunteer as an individual or school or youth group. We will sign off on volunteer hour forms for school as part of our programs and special events.

Call Jody Dodson at (847) 259-6890 ext. 111 or email her at jdodson@saltcreekpd.com to volunteer.

Volunteers may also sign up innerview.org to for upcoming events. Check our website for more information.

SAVE THE DATE • EVENT CALENDAR

MARCH

	Date	Time	Page
Day Camp Registration	March 4-8	Find details on page	12
Family Bingo Night	Friday, March 8	5:30-7:00pm	24
Paint & Craft Night	Friday, March 15	6:30-8:00pm	23
Parents Night Out	Friday, March 15	6:00-9:30pm	14
You've Been Egged	Monday & Tuesday, March 25 & 26	3:00-6:00pm	24
Spring Break Trips	Monday-Friday, March 25-29	9:00am-4:00pm	16
Flashlight Egg Hunt	Wednesday, March 27	7:45-8:15pm	24
Lunch with the Bunny	Friday, March 29	11:00am-2:30pm	24
Easter Egg Hunt	Saturday, March 30	10:00am	24

APRIL

	Date	Time	Page
Parents Night Out	Friday, April 19	6:00-9:30pm	14
Paint & Craft Night	Friday, April 19	6:30-8:30pm	23
Draft Day Watch Party	Thursday, April 25	6:00-9:00pm	25

MAY

	Date	Time	Page
School's Day Out	Friday, May 3	9:00am-4:00pm	16
Spring Trunk Sale	Saturday, May 4	9:00am-2:00pm	25
Color Run (2K)	Saturday, May 11	8:30am	25
Parents Night Out	Friday, May 17	6:00-9:30pm	14
Paint & Craft Night	Friday, May 17	6:30-8:00pm	23

JUNE

	Date	Time	Page
Fishing Derby	Saturday, June 1	8:00-11:30am	26
Rockin' the Lakes Concert	Friday, June 7	7:00-9:00pm	28
Music on the Deck	Wednesday, June 12	6:00-8:00 pm	28
Parents Night Out	Friday, June 21	6:00-9:30pm	14
Rockin' the Lakes Concert	Friday, June 21	7:00-9:00pm	28
Aquathon	Sunday, June 23	7:30am Start	26
Music on the Deck	Wednesday, June 26	6:00-8:00pm	28
Paint & Craft Night	Friday, June 28	6:30-8:00pm	23

JULY

	Date	Time	Page
Rockin' the Lakes Concert	Friday, July 5	7:00-9:00pm	28
Music on the Deck	Wednesday, July 10	6:00-8:00pm	28
Parents Night Out	Friday, July 19	6:00-9:30pm	14
Rockin' the Lakes Concert	Friday, July 19	7:00-9:00pm	28
Paint & Craft Night	Friday, July 26	6:30-8:00pm	23

AUGUST

	Date	Time	Page
Rockin' the Lakes Concert	Friday, August 2	7:30-9:30pm	28
Turtle Trek	Friday, August 2	6:30pm	27
Parents Night Out	Friday, August 16	6:00-9:30pm	14

PARK POLICIES & MORE

ADDITIONAL PARK DISTRICT INFORMATION

News, News, & More News!

In an effort to be environmentally friendly, we are trying to use electronic resources as much as possible. So, stay connected with all the news from the Salt Creek Rural Park District. Be a part of our digital family!

We have a monthly E-Newsletter, email blasts and, of course, our **Facebook** and **Instagram** pages.

Check out all the exciting programs and family events that we have available for you!

Please email us at info@saltcreekpd.com to be added to our digital address book.

For more information on the Salt Creek Sports Center, visit **saltcreeksportscenter.com**.

Please visit the Park District website **saltcreekpd.com** to view additional information regarding Park District activities.

Brochure Updates

Occasionally, updates are made to the brochure after it has been printed and distributed. Circumstances may require that adjustments be made to programs, fees, schedules, etc. The District reserves the right to make any such adjustments and apologizes for any inconvenience these adjustments may cause.

In Appreciation

The Salt Creek Rural Park District would like to thank School District #15 for allowing the Park District to use the schools' facilities for recreational programming. Through the cooperation of this agency, the Park District was able to offer more youth and adult recreational programs. Thanks to the District and the administrators who make it possible for the Park District to advance its programs.

Celebration/Memorial Program

You may make a contribution for a new tree or bench in one of the Salt Creek Park District's parks. Whether you are paying tribute to an individual or honoring someone special in your life, this is a unique way to provide a long-lasting gift that will serve as a perpetual reminder of those people who have made your life special. Call 847-934-6050 ext. 205 for information on packages available.

Interested in Instructing?

If you have a special hobby or talent you would like to share, the Salt Creek Park District is continually looking for new ideas and instructors to teach. Whether it is arts and crafts or athletics, we're open to ideas. Call the Park District at 847-259-6890.

PARK POLICIES

Public Conduct Notice

No person shall make, aid, or assist in making loud noise, riot or disturbance tending to a breach of the peace in any Park, or be guilty of any disorderly conduct therein or thereon, or collect, with other persons, in bodies or crowds for unlawful purposes, or for any purpose to the annoyance or disturbance of the other persons using a Park or residents adjacent to a Park. No person shall use abusive, insulting, or obscene language, or language calculated to occasion a breach of the peace, in any Park.

Playground Safety

A reminder to all parents: All Salt Creek Rural Park District playground areas are unsupervised. We hope that you and your children enjoy your play experience using the Salt Creek Rural Park District's parks. No dogs allowed in or around the playground.

Roller Blades/Scooters/Skateboards

Roller blades, skateboards, scooters and hoverboards are allowed on paved areas only. No rollerblades, skateboards, scooters or hoverboards are allowed on park district tennis courts, the wooden deck at Twin Lakes or in the nature areas.

Drone Policy

The Salt Creek Park District recognizes the popularity of unmanned aircrafts or drones and the need for large open spaces for the operation of these devices. However, the park district has to be cognizant of the safety and privacy concerns of our residents. In that respect, we ask that you please call our Rose Park Administrative Offices at 847-259-6890 for more information regarding our drone policy within our parks.

Park Vandalism

Please report vandalism by calling the administrative offices at 847-259-6890.

Dog Ordinance

The Salt Creek Park District enforces the following rules in regards to dogs in the parks:

- Dogs must be on a leash no longer than 6 ft. and under control at all times.
- Owners are responsible for removal and sanitary disposal of any excrement deposited by the animal on park property.
- Due to Public Health Rules, only **service** animals are allowed on patio areas around the Twin Lakes Recreation Area clubhouse, deck or tent.
- During special events, only **service** animals will be allowed in the areas where food is served or consumed.
- No dogs allowed in the water.
- No dogs allowed in or around the playground.



PRESCHOOL



Registration for 2024-2025 School Year

Residents & Returning Students **January 15-19, 2024**

Open Registration begins **January 22, 2024**

Registration must be done in person at Rose Park.

Preschool Philosophy

Our preschool curriculum is designed to give your child the tools and experiences to grow and learn in a positive and safe environment.

Our philosophy is to create an environment that stimulates all developmental areas of learning. Our preschool will provide a wide variety of learning experiences that will promote independence, decision-making and appreciation of the world around your preschooler.

Preschool Staff

Our preschool staff members are qualified, experienced teachers who pride themselves on creating a safe and warm learning environment. We maintain a ratio of one experienced teacher for every eight children in the afternoon prekindergarten class. Our ratio for the Terrific Threes (our morning 3/4 yr. old preschool class) is one teacher for every six children.

Registration Information (2024-2025)

- Children must be the appropriate age by September 1, 2024.
- Children must be toilet independent. No pull ups.
- **\$50 deposit (non-refundable)**
- All classes are held at Rose Park, 530 S. Williams Avenue.
- No School on Labor Day. School begins September 3 & 4.

Story in the Park

Ages 2+ yrs

Grab your blanket and join us for 10:00am story time for ages 2+ at one of our beautiful parks presented by the Palatine Public Library.

- 6/19 at Grealish Park Pavilion
- 7/31 at Rose Park Pavilion
- 8/14 at Twin Lakes Deck

FREE



2024-2025 PRESCHOOL CLASSES

Preschool

Age: 3-4 yrs (Must be 3 years old by September 1, 2024)

This program is designed for a child's first experience in a structured school setting. Our program offers an opportunity for the child to develop social skills, cooperative play, fine motor skills, sharing and listening to directions.

Location: Rose Park

Code	Options	Day	Time	Fee per Month
501100-01	2-day	Tu/Th	9:00-11:30am	\$180NR/\$165R
501100-02	3-day	M/W/F	9:00-11:30am	\$230NR/\$215R

Note: Children who turn 3 after September 1, 2024 and who are toilet independent, can join us after January 1, 2025 if spots are available. Call us at 847-259-6890 to arrange a visit to our preschool.

Prekindergarten

Age: 4-5 yrs (Must be 4 years old by September 1, 2024)

The PreK curriculum is designed to prepare your child with the readiness skills needed for entering kindergarten. This preparation will include an emphasis on cognitive skills, fine motor skills, socialization and cooperative play. Enrichment activities are structured to stimulate receptiveness to language, math, art, science and music.

Location: Rose Park

Code	Options	Day	Time	Fee per Month
501100-03	2-day	Tu/Th	12:30-3:00pm	\$180NR/\$165R
501100-04	3-day	M/W/F	12:30-3:00pm	\$230NR/\$215R
501100-05	4-day	Flexible	12:30-3:00pm	\$270NR/\$255R

EARLY CHILDHOOD

Enrichment Classes for Prekindergarten (2 Week Session)

Enrichment classes allow children to hone individual skills such as prereading, math, prewriting, and social/emotional learning. Children will enjoy art, science, group activities, and story time.

Instructor: Gretchen Elzer

Location: Rose Park

Session I - Go, Go Green!

Ages: 4-5 yrs

From shamrocks to frogs, we are exploring all things green! Using science, art and literature, we will discover Spring's favorite color.

Code	Day	Date	Time	Fee
206270-04	W	3/13 & 3/20	10:30am-12:30pm	\$38NR/\$36R

Session II - Romping, Stomping Dinosaurs!

Ages: 4-5 yrs

Let's explore these prehistoric giants! We will read non-fiction books, go on a dino dig, play dino math games, and even make our own fossils!

Code	Day	Date	Time	Fee
206270-05	W	4/3 & 4/10	10:30am-12:30pm	\$38NR/\$36R

Session III - Ducks Like Rain!

Ages: 4-5 yrs

Come meet Dorothy the Duck, Huckle's cousin! Dorothy will teach us all about ducks as we conduct duck science experiments, play duck-duck-goose, and read lots of duck stories.

Code	Day	Date	Time	Fee
206270-06	W	4/17 & 4/24	10:30am-12:30pm	\$38NR/\$36R

SUMMER ENRICHMENT

Instructor: Kathy Schneider

Art Smart • Ages: 3-5 yrs

Children will complete various open-ended art projects using a variety of materials including shaving cream, watercolors and nature items. Please dress in old clothes. Children will get messy!

Location: Rose Park Preschool

Code	Day	Date	Time	Fee
201125-03	M	7/1	9:00-10:30am	\$31NR/\$29R

Alphabet Adventure • Ages: 3-5 yrs

Join us as we enter the wonderful world of the alphabet! Using stories, rhymes, finger plays and games, children will explore letter recognition and sounds as well as simple sight words.

Location: Rose Park Preschool

Code	Day	Date	Time	Fee
201125-01	M	7/22	9:00-10:30am	\$31NR/\$29R

Kitchen Science • Ages: 3-5 yrs

Children will conduct simple science experiments using items found in the kitchen. We will investigate chemical reactions, density, and states of matter. The Scientific method will also be explored!

Location: Rose Park Preschool

Code	Day	Date	Time	Fee
201125-02	W	7/24	9:00-10:30am	\$31NR/\$29R

Kindergarten Prep

Age: Entering Kindergarten

Get ready for kindergarten! Children will enjoy group time, outdoor activities and individual skill practice all designed to get your child prepared for kindergarten. Make sure your child eats a good breakfast, as there will be NO snack time. **Sign up for both sessions as new material will be taught!**

Instructor: Kathy Schneider

Location: Rose Park

Code	Days	Dates	Time	Fee
206270-01	M/W	June 10, 12, 17, 19	9:00-11:00am	\$70NR/\$65R
206270-02	M/W	June 24 & 26, July 8 & 10	9:00-11:00am	\$70NR/\$65R



EARLY CHILDHOOD

Yogi Masters

Ages: 3-5 yrs

NEW

Calling all young Yogi Masters! This class is an introduction to yoga for early childhood ages. We will practice different poses, listen to songs to incorporate different yoga poses, read a story and more!

Code	Day	Date	Time	Fee
203225-01	Tu	4/11	3:00-3:45pm	\$16NR/\$14R

Location: Rose Park

Rock 'n' Kids Music and Dance Party: Zoo-Topia!

Ages: 1-5 yrs with parents

Join us for zoo-riffic fun at Rock 'n' Kids Zoo-Topia! We will engage in songs and musical activities all about your favorite zoo animals! Our unique, child-friendly rhythm instruments and movement props will be combined with a lot of imagination play and motor skills. It will make your little one roar with happiness! For more details, visit rockitkids.com.

Code	Day	Date	Time	Fee
201126-01	Tu	4/16	4:30-5:15pm	\$16NR/\$14R

Location: Twin Lakes

Tea 'n' Friends

Ages: 3-5 yrs

NEW

Bring your favorite stuffed friend for an afternoon of activities and treats! We will start out by introducing our stuffed friends, doing a craft and playing some games with our stuffed buddies. Once everyone works up an appetite, we will sit down and have an old-fashioned tea party together!

Code	Day	Date	Time	Fee
203225-02	F	5/24	3:00-3:45pm	\$16NR/\$14R

Location: Rose Park

Rock 'n' Kids Music and Dance Party: Boogie Bugs!

Ages: 1-5 yrs

Hop like a grasshopper, fly like a bee, Rock 'n' Kids Boogie Bugs is the place you'll want to be! Join us for musical fun with a "bug" twist! While using our imaginations, our bodies, and fun age-appropriate instruments and movement props, we will boogie to songs about bugs. It will be a wiggly experience you won't want to miss! Sing, dance, play and imagine with us! rockitkids.com

Code	Day	Date	Time	Fee
201126-02	Tu	6/18	4:30-5:15pm	\$16NR/\$14R

Location: Twin Lakes



Easter Events

YOU'VE BEEN EGGED MARCH 25 & 26

"Egg" your friends, neighbors or your own family with a surprise at home egg hunt!

FLASHLIGHT EGG HUNT March 27 at Twin Lakes



Bring your flashlight and join as the kids hunt for their own chocolate-filled eggs in the dark and everyone will have a chance to win prizes! Bring your flashlight and basket.

LUNCH WITH THE BUNNY March 29 at Twin Lakes

Join us for a visit from the Easter Bunny with lunch, craft, egg decorating & more!



ANNUAL EASTER EGG HUNT March 30 at Twin Lakes

Salt Creek Park District's Annual Easter Egg Hunt will be held on Saturday, March 30. All ages are welcome and the event is FREE!



SUMMER CAMPS

CAMP REGISTRATION DATES

Resident registration begins **March 4 & 5** • Returning Camper registration **March 6 & 7**.

Open registration is **March 11**.

We will only be accepting registrations in person. Please bring the registration form with you when registering.

The camp registration form will be online at saltcreekpd.com. We will NOT be accepting registrations through email, fax or mail.

Online registration is NOT available for day camp.

CAMP REGISTRATION

Listed below is some important information regarding our summer camp programs. For more information or questions, contact the Camp Supervisor at 847-259-6890 ext. 113.

Note: First Session of camp must be paid in full at the time of registration. Additional sessions may be reserved with a \$50 non-refundable deposit per session per child.

Deposit is not used toward session fees.

- **Session II** must be paid in full by **May 1**
- **Session III** must be paid in full by **May 31**
- **Session IV** must be paid in full by **June 30**

No refund given after:

Session I: May 31

Session II: June 21

Session III: July 12

Session IV: August 2

EXTENDED HOURS ARE AVAILABLE

Parents need to register for the entire 3-week session - no exceptions. *Extended hours are NOT available for Tot Camp.*

2-Hours Extended (7:00-9:00am AND/OR 3:30-5:30pm)

Days	Days per Week	AM <u>or</u> PM Session	AM <u>and</u> PM Session
Mon-Fri	5 days	\$110	\$220
M/W/F	3 days	\$70	\$140
Tu/Th	2 days	\$50	\$100

1-Hour Extended (8:00-9:00am AND/OR 3:30-4:30pm)

Days	Days per Week	AM <u>or</u> PM Session	AM <u>and</u> PM Session
Mon-Fri	5 days	\$60	\$120
M/W/F	3 days	\$40	\$80
Tu/Th	2 days	\$30	\$60

Drop off and pick up at Rose Park. Campers will be transported to their camp site at 9:00am.



EXTRA DAYS FOR CAMP - See page 13 for Before Summer Fun Camp.

SUMMER CAMPS

CAMPS FOR TOTS

Tot Camp (Ages 3-5)

(Extended hours not available) • No Camp 7/4

Tot camp is a preschool-aged camp that provides an enriching and playful environment. Campers will explore art, science, friendship, music and outdoor play through each theme. Each day will include open play, snack, craft and extension activity.

Location: Rose Park

Session	Code	Day	Date	Time	NR/R Fee
I	202100-01	T/Th	6/4-6/20	9:00-11:30am	\$178/\$154
II	202100-02	T/Th	6/25-7/11	9:00-11:30am	\$148/\$128
III	202100-03	T/Th	7/16-8/1	9:00-11:30am	\$178/\$154

Before Summer Fun Camp (no extended hours)

Grades: 1st-8th

Join us at Salt Creek Park District for a week of fun and exciting games the week before camp starts! Check our website at saltcreekpd.com for field trip schedules.

Code	Day	Date	Time
202700-01	Tu	5/28	9:00am-4:00pm
202700-02	W	5/29	9:00am-4:00pm
202700-03	Th	5/30	9:00am-4:00pm
202700-04	F	5/31	9:00am-4:00pm

Daily Rate: \$49NR/\$47R • **Location:** Twin Lakes

FULL DAY CAMPS

Our goal for our summer day camp is to nurture the potential of every camper to help them experience a summer filled with fun, growth, learning, excitement and friends. Our camp counselors guide campers throughout the experience, ensuring the safety and well-being of the campers. Each camp offers a variety of activities, including crafts, games, swimming and field trips, and more adventures. **Campers are separated into age groups for some activities. No camp 7/4.**

All participants will receive one camp t-shirt for the summer.

Additional t-shirts can be purchased at registration.

Location: Twin Lakes

Camp Sunshine (Grades 1-5) • 5 days/week

Session	Code	Day	Date	Time	NR/R Fee
I	202200-01	M-F	6/3-6/21	9am-3:30pm	\$382/\$352
II	202200-02	M-F	6/24-7/12	9am-3:30pm	\$319/\$293
III	202200-03	M-F	7/15-8/2	9am-3:30pm	\$382/\$352
IV	202200-03	M-F	8/5-8/23	9am-3:30pm	\$382/\$352

Partly Sunny Camp (Grades 1-5) • 3 days/week

Session	Code	Day	Date	Time	NR/R Fee
I	202500-01	M/W/F	6/3-6/21	9am-3:30pm	\$265/\$238
II	202500-02	M/W/F	6/24-7/12	9am-3:30pm	\$226/\$202
III	202500-03	M/W/F	7/15-8/2	9am-3:30pm	\$265/\$238
IV	202500-04	M/W/F	8/5-8/23	9am-3:30pm	\$265/\$238

Fun in the Sun Camp (Grades 1-5) • 2 days/week

Session	Code	Day	Date	Time	NR/R Fee
I	202300-01	T/Th	6/4-6/20	9am-3:30pm	\$214/\$178
II	202300-02	T/Th	6/25-7/11	9am-3:30pm	\$178/\$148
III	202300-03	T/Th	7/16-8/1	9am-3:30pm	\$214/\$178
IV	202500-04	T/Th	8/6-8/22	9am-3:30pm	\$214/\$178



Teen Camp (Grades 6-8) • 2-3 days/week

This camp is designed specifically for the middle and pre-high school children. Teen Campers will participate in a variety of activities such as competitions, theme days, field trips and pool days.

Location: Grealish Park

Session	Code	Day	Date	Time	NR/R Fee
I	202400-01	M/W/F	6/3-6/21	9am-3:30pm	\$265/\$238
II	202400-02	M/W/F	6/24-7/12	9am-3:30pm	\$226/\$202
III	202400-03	M/W/F	7/15-8/2	9am-3:30pm	\$265/\$238
IV	202400-04	M/W/F	8/5-8/23	9am-3:30pm	\$265/\$238

I	202400-05	T/Th	6/4-6/20	9am-3:30pm	\$214/\$178
II	202400-06	T/Th	6/25-7/11	9am-3:30pm	\$178/\$148
III	202400-07	T/Th	7/16-8/1	9am-3:30pm	\$214/\$178
IV	202400-08	T/Th	8/6-8/22	9am-3:30pm	\$214/\$178

YOUTH PROGRAMS

Youth Programs and Youth Athletics are co-op programs so please make sure to see the locations under each description.

Parents Night Out

Ages: 5-12 yrs

Kids can have fun in a safe, enriching environment while parents go out for the evening. Each month a new theme will determine the activities, crafts, movie and snack. New friends are welcome and encouraged to join in the fun! Please bring a pillow and blanket for comfortable movie watching.

Location: Rose Park

Theme	Code	Day	Date	Time
St. Paddy's Celebration	206125-01	F	3/15	6:00-9:30pm
Harry Potter Night	206125-02	F	4/19	6:00-9:30pm
Halloween in May	206125-03	F	5/17	6:00-9:30pm
Pajama Night	206125-04	F	6/21	6:00-9:30pm
Game Show Night	206125-05	F	7/19	6:00-9:30pm
End of Summer Fun	206125-06	F	8/16	6:00-9:30pm

Fee: \$15/first child (\$10 each additional child)

Magic Class

Ages: 5-12 yrs

Children are guaranteed to have a great time as they learn a collection of fascinating and mesmerizing tricks from the "Magic Team of Gary Kantor"! Amaze family and friends with tricks that involve cards, ropes, coins, mind-reading and more. All materials are provided and each child receives a magic kit to take home. Children are grouped by age and always learn tricks that are age-appropriate. Additionally, you can sign up for this class again and again, since brand new tricks are always taught at each session! Classes can be taken virtually too!

Instructor: Magic Team of Gary Kantor

Location: Palatine Park District Community Center
250 E. Wood Street, Palatine, IL 60067

Code	Day	Date	Time	Fee
206150-01	Tu	4/9	5:00-5:55pm	\$32NR/\$22R

Bach to Rock: Fun with Music!

Ages: 6-8 yrs

Kids get hands-on music education with instruments like the piano, guitar, and drums. It's a great way to learn core musical concepts, including how to read music. At the same time, kids get to experience different instruments before they decide which one they want to play!

Location: Twin Lakes Multi-Purpose Room

Code	Day	Date	Time	Fee
203325-01	Th	5/9	3:30-4:15pm	\$16NR/\$14R
203325-02	Th	8/1	3:30-4:15pm	\$16NR/\$14R



Computer Explorer Classes

Location for the following two classes: Rolling Meadows Park District, 3705 Pheasant Drive, Rolling Meadows, IL

Lights, Camera... Superheroes

Ages: 8-12yrs

Join us as we summon writer, directors and editor to make our own super movie. Working in teams to create our own story and script, create your own background scenes and film our own movie, using your own characters, we'll help to stop crime in our movie city. All students get a copy of their movie after class is complete.

Code	Day	Date	Time	Fee
206152-01	Tu	4/2-4/23	6:00-7:15pm	\$119NR/\$91R

Cars, Catapults & Bridges

Ages: 7-12yrs

This class focuses on teaching the FUNdamentals of engineering. Working in teams, each session builds upon each skill level as students learn about levers, wheels/axels, gears. Projects may include building drawbridges, cars, amusement rides, catapults and more! Have fun while you explore concepts you can use at home.

Code	Day	Date	Time	Fee
206152-02	Tu	4/30-5/21	6:00-7:15pm	\$119NR/\$91R

Location for the following two classes: Palatine Park District Community Center, 250 E. Wood Street, Room 1G, Palatine, IL

Minecraft Madness

Ages: 7-12yrs

Students will discover how to expand their worlds' possibilities using popular Minecraft game-enhancing mods. Build traps, arrow launchers, faster rail systems and participate in building challenges! Learn fundamentals of computer networking through this unique Minecraft experience that also allows you and your friends to work in multiplayer mode as you mine, craft and build together.

Code	Day	Date	Time	Fee
206152-03	M-Th	6/17-6/20	4:00-5:30pm	\$150NR/\$120R

Robot Engineers

Ages: 7-12yrs

This course builds knowledge of simple machines, engineering, programming, and teamwork using the LEGO WeDo Robotics System, as students use an intuitive, icon-based programming environment, helping to bring their model to life.

Code	Day	Date	Time	Fee
206152-04	M-Th	7/15-7/18	4:00-5:30pm	\$150NR/\$120R

YOUTH ATHLETICS AND PROGRAMS

Preschool and Kindergarten Martial Arts

Ages: 4-6 yrs

You won't believe the numerous benefits your child will receive from this class. They will develop flexibility, coordination, and physical fitness while learning a variety of martial arts skills as they run, jump, kick, tumble, and much more. Emphasis will also be placed on focus, respect, and discipline. Parents are welcome to attend

Location: JP Wood Martial Arts, 249 E Northwest Hwy, Palatine IL

Code	Day	Date	Time	Fee
203127-01	W	4/10-5/29	4:00-4:45pm	\$62
203127-02	W	6/12-7/31	4:00-4:45pm	\$62

Martial Arts and Tae Kwon Do Dragon Class

Ages: 4½-6 yrs

This class is a step up from the Preschool and Kindergarten Martial Arts classes. Your child will train in kicking drills, footwork, self-defense, calisthenics, agility, forms and much more. This is a curriculum-based program where students progress in belts. The first time you register for this class you will receive your uniform and test for free.

Location: JP Wood Martial Arts, 249 E Northwest Hwy, Palatine IL

Code	Day	Date	Time	Fee
203127-03	Tu	4/9-6/4	4:00-4:45pm	\$125
203127-04	Tu	6/11-8/13	4:00-4:45pm	\$139

Martial Arts & Tae Kwon Do Family Class

Ages: 7 yrs-Adult

You'll train in kicking drills, footwork, self-defense, agility training, forms, sparring, and so much more! At the same time, you'll learn all-important life skills such as respect, focus, self-control, and discipline. As a first-time student, you will receive your first evaluation and uniform for free. For questions, please call Grand Master Wood at 847-705-8714. **No class 7/4**

Location: JP Wood Martial Arts, 249 E Northwest Hwy, Palatine

Code	Day	Date	Time	Fee
203128-05	Tu	4/9-6/4	5:00-6:00pm	\$125
203128-06	Tu	6/11-8/13	5:00-6:00pm	\$125
203128-07	W	4/10-6/5	6:00-7:00pm	\$125
203128-08	W	6/12-8/14	6:00-7:00pm	\$125



Archery (4 Weeks)

Ages: 8+ yrs

Archery is a fun, perfect fit for children interested in getting involved with the sport of target archery. If you are new to the sport or a beginner archer looking for an introductory program, this class has what you need to get started. You'll learn important skills like range safety, proper shooting form, and have the chance to start hitting targets right away. These classes are taught by a USA Archery certified instructor who will ensure a safe, controlled, and fun environment. All equipment is provided with the class. Dates and times are subject to change. Check our website for updates.

Location: Birchwood Park Gym, 435 West Illinois, Palatine
Instructor: Wayne Hockett

Beginner

Code	Day	Date	Time	Fee
203250-01	M	4/1-4/22	6:00-7:00pm	\$82NR/\$65R
203250-02	M	6/3-6/24	6:00-7:00pm	\$82NR/\$65R
203250-03	M	7/8-7/29	6:00-7:00pm	\$82NR/\$65R
203250-04	M	8/5-8/26	6:00-7:00pm	\$82NR/\$65R

Intermediate 1

Code	Day	Date	Time	Fee
203250-05	M	4/1-4/22	7:00-8:00pm	\$82NR/\$65R
203250-06	M	6/3-6/24	7:00-8:00pm	\$82NR/\$65R
203250-07	M	7/8-7/29	7:00-8:00pm	\$82NR/\$65R
203250-08	M	8/5-8/26	7:00-8:00pm	\$82NR/\$65R

Intermediate 2

Code	Day	Date	Time	Fee
203250-09	M	4/1-4/22	7:00-8:00pm	\$82NR/\$65R
203250-10	M	6/3-6/24	7:00-8:00pm	\$82NR/\$65R
203250-11	M	7/8-7/29	7:00-8:00pm	\$82NR/\$65R
203250-12	M	8/5-8/26	7:00-8:00pm	\$82NR/\$65R

*Must have taken previous level or have instructor's permission.

MORE!

Check our our **ADULT KARATE**
ages 14+ on pages 17-18.

YOUTH ATHLETICS AND PROGRAMS

Little Sluggers T-Ball (5 Weeks)

Ages: 4-6 yrs

Children will learn the game of T-Ball and baseball including throwing, catching, hitting, and fielding. The instructor utilizes cooperative game play, and every child goes home a winner. Each child must bring their own glove. We will move indoors in the basement in case of inclement weather.



Location: Twin Lakes

Code	Day	Date	Time	Fee
203275-01	M	4/8-5/6	3:30-4:15pm	\$48

Little Dribblers Basketball (5 Weeks)

Ages: 4-6 yrs

They dribble, they shoot, they score! This program will prepare and introduce your children to the game of basketball and work to develop skills in order to move to a higher level of learning. Basic skills of dribbling, passing, shooting, and defense will be taught. Games will also be played to show the importance of teamwork.



Location: Salt Creek Sports Center

Code	Day	Date	Time	Fee
203150-01	Tu	4/9-5/7	3:30-4:15pm	\$48

Little Strikers Indoor Soccer (5 Weeks)

Ages: 4-6 yrs

This program offers players the opportunity for children to learn the fundamentals of soccer in a fundamentals of soccer game and activities that improve skills, develop coordination, and increase the enjoyment of the game.



Location: Salt Creek Sports Center

Code	Day	Date	Time	Fee
203126-03	Th	4/11-5/9	3:30-4:15pm	\$48



For Spring Break Trips and Schools Day Out, make sure children wear comfortable clothes, sock and gym shoes. Please also pack a lunch, snack and drink everyday.

Spring Break Trips

Ages: 6-12

Please check website for field trip information, as well as drop-off & pick up details.

Code	Day	Date	Time	Field Trips
204100-01	M	3/25	9am-4pm	Safariland
204100-02	Tu	3/26	9am-4pm	Wheeling Indoor Pool
204100-03	W	3/27	9am-4pm	Enchanted Castle
204100-04	Th	3/28	9am-4pm	Dunn Museum
204100-05	F	3/29	9am-4pm	AMC Theaters

Fee: \$49NR/\$47R

School's Day Out

Ages: 6-12

Please check website for drop-off & pick up information.

Code	Day	Date	Time	Field Trips
102100-05	M	2/19	9am-4pm	First Ascent Climbing & Fitness
102100-06	Tu	2/20	9am-4pm	Art Fuzd
102100-08	F	5/3	9am-4pm	Dave & Busters

Fee: \$49NR/\$47R



Swing into Spring Break Camp!

Have the kids join us for a week of fun while they are off school! Kids will have fun going on field trips, playing games, sports, crafts, movies and more! For more details, visit saltcreekpd.com.

YOUTH KARATE



Pre-Karate

Ages: 4-6 yrs

In our Pre-Karate classes, young children develop flexibility, strength, and coordination in fun, yet disciplined activities. This program is specifically designed for growing minds and bodies to enhance memory and agility. Watch your child's confidence blossom and their skills improve. **No class 7/4.**

Location: Birchwood Center, 435 W. Illinois, Palatine
(Spring-10 weeks / Summer-11 weeks)

Code	Level	Day	Date	Time	Fee
209100-01	BEG/CONT	Tu	4/2-6/4	4:15-5:00pm	\$143
209100-02	BEG/CONT	Tu	6/11-8/20	4:15-5:00pm	\$157

Location: Frontier Park, 1933 N. Kennicott, Arlington Heights
(10 weeks-Spring / Summer-11 weeks)

Code	Level	Day	Date	Time	Fee
209100-05	BEG	Th	4/4-6/6	4:00-4:45pm	\$143
209100-06	CONT	Th	4/4-6/6	4:50-5:35pm	\$143
209100-08	BEG	Th	6/13-8/29	4:00-4:45pm	\$157
209100-09	CONT	Th	6/13-8/29	4:50-5:35pm	\$157

Youth Karate

Ages: 7-14 yrs

ISKC's karate classes will put children in touch with their bodies and offer a good mix of strength training with cardiovascular and flexibility exercises. Children increase their coordination, agility and poise, as well as learn lasting personal safety skills. They also benefit from the mental stimulation of learning the choreographed moves of the kata and the discipline of conforming to the class rules. **No class 7/4.**

Location: Birchwood Center, 435 W. Illinois, Palatine
(Spring-10 weeks / Summer-11 weeks)

Code	Level	Day	Date	Time	Fee
209125-01	BEG/CON (WH-RD)	Tu	4/2-6/4	5:00-6:00pm	\$143
209125-03	INT/ADV (OR-PU)	Tu	4/2-6/4	5:00-6:00pm	\$143
209125-06	BEG/CON (WH-RD)	Tu	6/11-8/20	5:00-6:00pm	\$157
209125-08	INT/ADV (OR-PU)	Tu	6/11-8/20	5:00-6:00pm	\$157

Location: Frontier Park, 1933 N. Kennicott, Arlington Heights
(10 weeks-Spring / Summer-11 weeks)

Code	Level	Day	Date	Time	Fee
209125-11	BEG/CONT (WH-RD)	Th	4/4-6/6	5:40-6:35pm	\$143
209125-12	NOV (OR-BL)	Th	4/4-6/6	6:40-7:35pm	\$143
209125-13	INT/ADV (GN-BN)	Th	4/4-6/6	7:35-8:35pm	\$143
209125-18	BEG/CONT (WH-RD)	Th	6/13-8/29	5:40-6:35pm	\$157
209125-19	NOV (OR-BL)	Th	6/13-8/29	6:40-7:35pm	\$157
209125-20	INT/ADV (GN-BN)	Th	6/13-8/29	7:35-8:35pm	\$157

Illinois Shotokan Karate Club is Chicagoland's premier karate school taught under the instruction of John DiPasquale, a four-time National Champion, and President of the American Shotokan karate Association.

- Uniforms and Belt-Testing are options available through the ISKC instructor.
- Youth and Adult classes may train together.
- Beginner students will not be permitted to register into the current session after the second class has met.
- Registration for continuers through advanced students will be accepted after the start date, but the full class fee is required.
- Visit iskc.com for more information or call us at 847-359-0666.

LEVEL	CODE	LEVEL	CODE
Beginner/No experience	BEG/NE	Blue	BL
Continuer (one or more sessions)	CON	Orange	OR
Intermediate (instructor permission)	INT	Yellow	YL
Advanced (instructor permission)	ADV	Purple	PU
Novice (one or more sessions)	NOV	Green	GN
White	WH	Black	BK
Red	RD	Brown	BN
Stripes-Orange	S-T		

MORE!

Check our our **ADULT KARATE**
ages 14+ on page 18.

ADULT PROGRAMS

Adult Karate

(Spring-10 weeks / Summer-11 weeks)

Ages: 14+ yrs

Our adult classes release tension, develop total body fitness and build stamina and overall productivity! In addition to self-defense skills, karate increases flexibility, cardiovascular endurance, and muscle tone, while improving core strength. **No class 7/4.**

Location: Frontier Park, 1933 N. Kennicott, Arlington Heights

Code	Level	Day	Date	Time	Fee
209175-01	INT/ADV (GR-BL)	Th	4/4-6/6	8:40-9:55pm	\$163
209175-03	INT/ADV (GR-BL)	Th	6/13-8/29	8:40-9:55pm	\$179

Youth/Adult Karate

Ages: 7+ yrs

Open to parents and their children and for adults to register individually. This class is a great way to spend quality time with your child. Fee is per participant.

Location: Frontier Park, 1933 N. Kennicott, Arlington Heights
(Spring-10 weeks / Summer-11 weeks)

Code	Level	Day	Date	Time	Fee
209125-15	NOV (RD-OR)	Sa	4/6-6/8	10:00-10:55am	\$143
209125-16	INT (YELLOW-PU)	Sa	4/6-6/8	11:00-11:55am	\$143
209125-17	ADV (BN-BK)	Sa	4/6-6/8	12:00-12:55pm	\$143
209125-21	BEG/CONT(WH)	Sa	6/15-8/24	9:00-9:55am	\$157
209125-22	NOV (RD-OR)	Sa	6/15-8/24	10:00-10:55am	\$157
209125-23	INT (YL-PU)	Sa	6/15-8/24	11:00-11:55am	\$157
209125-24	ADV(BN-BK)	Sa	6/15-8/24	12:00-12:55pm	\$157

Location: ISKC Dojo, 327 N. Eric Drive, Palatine
(Spring-10 weeks / Summer-11 weeks)
Ages 10-16 (6:30pm)/17+ (8pm)

Code	Level	Day	Date	Time	Fee
209125-30	ADV-BN-BK (1.25 hrs)	Tu	4/2-6/4	6:30-7:45pm	\$163
209125-31	ADV-BL (1.25 hrs)	Tu	4/2-6/4	8:00-9:15pm	\$163
209125-32	ADV-BN-BK (1.25 hrs)	Tu	6/11-8/20	6:30-7:45pm	\$179
209125-33	ADV-BL (1.25 hrs)	Tu	6/11-8/20	8:00-9:15pm	\$179



Men's Drop-In Basketball

Ages: 18+ yrs

Drop in for some recreational basketball and have a great time! The supervisor will have a calendar of drop-in dates for the year or visit the website for up to date play information. Participants must sign in each night of play. Dates subject to change based upon availability at the school. **No drop-in on 3/29**

Location: Winston Park Campus (Junior High Gym)
900 East Palatine Road, Palatine

Day	Date	Time	Fee
W	Sep-May	7:00-9:00pm	\$6

Check www.saltcreekpd.com for Drop-in calendar dates.

Co-Ed Drop-In Volleyball

Ages: 18+ yrs

Looking for a good volley? Drop in for co-ed recreational volleyball. The supervisor will have a calendar of drop-in dates for the year or visit the website for up-to-date play information. Participants must sign in each night of play. **No drop-in on 3/28**

Location: Winston Park Campus (Junior High Gym)
900 East Palatine Road, Palatine

Day	Date	Time	Fee
Tu	Sep-May	7:00-9:00pm	\$6

Check saltcreekpd.com for Drop-in calendar dates.

Drop-In Punch pass

Participants may purchase an 8-punch pass in advance for \$48 at our Rose Park office between 8:30am-5:00pm, Monday-Friday. Our Drop-in Supervisor will punch your pass each time you play. We are not responsible for lost punch passes.



ADULT PROGRAMS

For up-to-date schedules, standings and results, visit our website saltcreekpd.com.

Co-Ed Sand Volleyball Leagues

Ages: 18+ yrs

Whether you are looking to play competitively or just have some fun, this intermediate league is for you! The season will run from the beginning of June through August, depending on rain, with a double elimination tournament for the top six teams played at the end of the regular season. If you are interested in signing a team up, please call (847) 259-6890 x113. **Registration deadline: May 24.**

Location: Twin Lakes Volleyball Courts

Level	Code	Day	Date	Time	Fee
Interm. 6's	208300-01	M	6/3-7/29	6:30-8:30pm	\$215
Interm. 4's	208300-02	Tu	6/4-7/30	6:30-8:30pm	\$200
Interm. 2's	208300-03	Th	6/6-8/1	6:30-8:30pm	\$180



DANCE

Line Dance (6 Weeks)

Ages: 16+ yrs

Learn the best line dances from professional line dance and jitterbug champion, Shelley Gross. She will teach basic steps to popular line dances. Beginner students are welcome, and no partner is required! All dances are perfect for any social function, as well as nightclubs or country western venues. It's a great way to do low-aerobic exercise and improve your dance skills to all genres of music too!

Instructor: Shelley Gross

Location: Plum Grove Park, 4001 Park Drive, Palatine, IL, 60067

Code	Day	Date	Time	Fee
207700-01	Tu	4/30-6/4	7:30-8:30pm	\$56



TWIN LAKES



PALATINE, ILLINOIS

June 23 at 7:30am

700-Meter Swim followed by a 5k Run!

*Don't miss out on this fun endurance event!
See page 26 for details.*

MORE!

Check out our Adult Fitness
Classes on pages 20-21.

ADULT FITNESS

GROUP FITNESS SCHEDULE

NO CLASSES DURING SPRING BREAK 3/25-3/30.

TIME	MONDAY	TUESDAY	WEDNESDAY	THURSDAY	SATURDAY
8am 9am			Zumba 9:30-10:30am		Body Blast 8:30-9:30am
5-6pm	Zumba Toning 5:30-6:30pm All Around Fitness 6:30-7:30pm	Zumba Toning 5:45-6:45pm		Cardio Blast 6:00-7:00pm	
7pm				Tai Chi 7:00-8:00pm	


Interested in trying out a new class, or does your schedule make it difficult to attend a full class? Purchase a **Fitness Punch Pass!**


8-punch Fitness Punch Pass (\$56) or 16-punch pass (\$112)

Fitness passes allows you to attend any fitness class that accommodates your schedule. Passes do not expire and will roll over from session to session. Limit 1 punch card per session per person. **1 Visit = 1 Punch.** Punch passes need to be purchased in person at the Rose Park office and a waiver will need to be completed upon purchase.

CLASS FITNESS INFORMATION

- All classes are located in the Twin Lakes Clubhouse unless otherwise noted.
- Class intensity levels are represented by barbells. Instructors adjust and modify exercises to the needs and abilities of the participants.
- No refunds will be given after the third class. See page 39 for refund information.
- Make up dates can be completed at any class offered. Please note that make-ups should occur within the current fitness session.
- All participants will receive \$5 off if they register for three or more classes during the same session.
- **Class Intensity:**

Low = 

Moderate = 

High = 

Interested in teaching fitness?

Availability on Tuesdays & Wednesdays

Please call the Rose Park office at 847-259-6890.

All Around Fitness

Ages: 18+ yrs



Come join the Fit Club! A one-stop shop with hi/low cardio, Piyo, strength and core training. All levels are accepted and encouraged.

Instructor: Tammy Sopoci • **No Class 3/25, 5/27 & 7/15**

Code	Day	Date	Time	Fee
107100-07	M	2/19-4/8	6:30-7:30pm	\$42
207100-04	M	4/15-6/3	6:30-7:30pm	\$42
207100-05	M	6/10-7/29	6:30-7:30pm	\$42

Zumba Toning

Ages: 18+ yrs



Zumba Toning takes the energetic world rhythms and easy-to-follow choreography you've come to know and love but adds lightly-weighted toning sticks to sculpt and define! The added resistance helps you focus on specific muscle groups so you and your muscles stay engaged! The maraca-like toning sticks enhance sense of rhythm and coordination, while toning target zones, including arms, core and lower body. Expect to burn 550-800 calories each session!

Instructor: Veronica Biazio

No Class 3/25, 3/26, 5/27, 7/15 & 7/16

Code	Day	Date	Time	Fee
107100-11	M	2/19-4/8	5:30-6:30pm	\$42
207100-07	M	4/15-6/3	5:30-6:30pm	\$42
207100-08	M	6/10-7/29	5:30-6:30pm	\$42
107100-19	Tu	2/20-4/9	5:45-6:45pm	\$42
207100-28	Tu	4/16-6/4	5:45-6:45pm	\$48
207100-29	Tu	6/11-7/30	5:45-6:45pm	\$42

ADULT FITNESS

Zumba® With Veronica

Ages: 18+ yrs



Do you love to dance or just love music? Come join the Zumba® dance fitness party. We take the "work" out of workout by mixing low-intensity and high-intensity moves for an interval-style, calorie-burning class. Dance to a blend of Latin and World music, guaranteed to keep you moving! Routines can be modified for whatever your current level of fitness, perfect for everybody and every body!

Instructor: Veronica Biazio • **No Class 3/27 & 7/17**

Code	Day	Date	Time	Fee
107100-15	W	2/21-4/10	9:30-10:30am	\$42
207100-43	W	4/17-6/5	9:30-10:30am	\$48
207100-44	W	6/12-7/31	9:30-10:30am	\$42

Cardio Blast

Ages: 18+ yrs



This workout will consist of a variety of hi-lo, step and boot camp style exercises. This class is 30 minutes of cardio followed by 30 minutes of strength conditioning and abs.

Instructor: Patty Fugate • **No Class 3/28 & 7/4**

Code	Day	Date	Time	Fee
107100-47	Th	2/22-4/11	6:00-7:00pm	\$42
207100-13	Th	4/18-6/6	6:00-7:00pm	\$48
207100-14	Th	6/13-8/1	6:00-7:00pm	\$42

Tai Chi

Ages: 18+ yrs



Join us for this Tai Chi class consisting of slow, flowing and relaxed movements practiced without force or power. Breathing is matched in time to the movements is the key to this class. This exercise class is intended for all ages and can strengthen the immune system, improve overall health and maintains the body's natural balance. Learning this form will help release tension, improve circulation, increase flexibility and develop muscle tone.

Instructor: Patty Fugate • **No Class 3/30 & 7/4**

Code	Day	Date	Time	Fee
107100-48	Th	2/22-4/11	7:00-8:00pm	\$42
207100-33	Th	4/18-6/6	7:00-8:00pm	\$48
207100-34	Th	6/13-8/1	7:00-8:00pm	\$42

Body Blast

Ages: 18+ yrs



Body Blast is a class that mixes traditional callisthenic and body weight exercises with interval and strength training. Each class will consist of an efficient and challenging workout. In this class, you can see fast results.

Instructor: Julie Wilson • **No Class 3/30**

Code	Day	Date	Time	Fee
107100-51	Sa	2/24-4/13	8:30-9:30am	\$42
207100-19	Sa	4/20-6/8	8:30-9:30am	\$48
207100-20	Sa	6/15-8/3	8:30-9:30am	\$48

Zumba & Wine

Ages: 21+ yrs



Enjoy a fun Zumba workout with Veronica and after the workout enjoy a social with friends. **Pre-registration is required!**

Instructor: Veronica Biazio

Code	Day	Date	Time	Fee
207100-22	F	5/17	6:30-8pm	\$16 (Zumba & Zumba Toning)
207100-23	F	8/9	6:30-8pm	\$16 (Zumba)
207100-24	F	9/13	6:30-8pm	\$16 (Zumba Toning)



MORE!

Find our Adult Programs
on pages 18-19.

BREAKAWAY TRIPS

The Park District enjoys seeing people having a good time, so join us for fun and exciting trips!

Call 847-259-6890 or visit our website at saltcreekpd.com for more information.

BREAKAWAY TRIPS: 55 & Older Break-Away Excursions

- All trips meet and return to Twin Lakes, 1200 E Twin Lakes Drive, unless noted in description.
- All registrations are based on a first-come, first-served basis.
- Those participating in the Senior Trips must be able to address their own personal needs. If you require special accommodations, please make the necessary arrangements or request an aide directly from us.
- Once the Park District has made final payments for any trip (transportation, tickets, meals), there will be no refund issued.
- There is a set of guidelines outlining the Code of Conduct for each trip so everyone can enjoy the activities. These guidelines can be found on our website. Thank you for participating and being respectful of yourself, as well as the space and others around you.

Mystery in the Mansion Trip

Ages: 55+ years



Join us as we travel to the Jacob Henry Mansion in Joliet, IL for a murder mystery show "Death of a Gangster." Join the Dunn family for the mafia wedding of the century! Don your best 1920 wedding attire for the Don and his goons. This show will have you in stitches... especially if you're a snitch! Transportation, ticket and lunch are included. Lunch: Salad, dinner rolls with butter, apricot chicken, rice, green bean almondine and dessert. (Arrival 11:15am, Lunch & Show 11:30am, Self-Guided Tour 1:00pm, Departure 1:30pm) **Registration deadline: March 25.**

Code	Day	Date	Time	Fee
204400-01	Th	4/11	9:30am-3:00pm	\$80NR/\$75R

Denny Diamond at White Fence Farm

Ages: 55+ years



Join us for a fun performance from Denny Diamond featuring selections from the vast library of two of Brooklyn's favorite singer songwriters, Neil Diamond & Barry Manilow. Transportation, performance, lunch and gratuity are included. Your lunch includes: four pieces of White Fence Farm chicken, homemade corn fritters, baked potato, cottage cheese, kidney bean salad, coleslaw, and pickled beets, and a choice of coffee, tea, soft drink. Cash bar is available. **Registration deadline: April 10.**

Code	Day	Date	Time	Fee
204400-02	W	4/24	10:00am-3:30pm	\$65NR/\$60R

The Four C Notes

Ages: 55+ years



Join us as we travel to the Jacob Henry Mansion in Joliet to enjoy the Midwest's only tribute band dedicated to recreating the music of Frankie Valli and the Four Seasons. The Four C Notes was created by John Michael Coppola, best known for his appearance in Chicago's long running production of the Broadway smash hit, Jersey Boys. Enjoy a pasta trio lunch of manicotti with cheese, fettucine alfredo, and spaghetti with meatballs. (Tour 10:45am, Check-in 11:15am, Lunch 11:30am, Show 1:00pm, Church Tour 2:00pm, Departure 3:00pm) **Registration deadline: April 22.**

Code	Day	Date	Time	Fee
204400-03	Th	5/9	9:30am-4:30pm	\$80NR/\$75R



MORE!

Find our Adult Programs
on pages 18-19.

ART PROGRAM

Paint & Craft Night

Enjoy this summer painting on canvas with an instructor from SmilingShamrock.com. Guidelines and step-by-step instructions are also provided to make the project easy and enjoyable! See each project for age requirements. Food and beverage are available for purchase through RoccoVino's.

Instructor: Smiling Shamrock Art
Location: Twin Lakes Clubhouse

Giraffe (all ages)

March 15, 2024, 6:30-8:00pm

Create a very cute Giraffe with paint, markers and sponges on a 9" x 12" canvas board! The project is easy, and the pencil outlined piece of art will be adorable!

Fee: \$26 each

Code: 105326-06

Abstract Flowers (all ages)

April 19, 2024, 6:30-8:30pm

Paint these fun, abstract flowers in any colors you like on a 9" x 12" canvas panel. All designs will be unique and beautiful!

Fee: \$24

Code: 105326-07

Floral Spring Welcome Sign (all ages)

Friday, May 17, 2024, 6:30-8:00pm

Paint a floral design to welcome guests into your home. 12" circle.

Fee: \$26 each

Code: 206705-01

Button Art (all ages)

Friday, June 28, 2024, 6:30-8:00pm

Choose a design for your 8" x 10" canvas: turtle, butterfly, owl or dinosaur.

Fee: \$22/each

Code: 206705-02

Parisian Cat and Bicycle (all ages)

Friday, July 26, 2024, 6:30-8:00pm

Enjoy painting a cute cat on a bicycle in Paris! This is an easy project with guidelines provided. Can be framed.

Fee: \$26 each

Code: 206705-03



SPECIAL EVENTS

Family Bingo Night - St. Paddy's Theme

Ages: 3+ yrs

Bring the family out for BINGO night. We will have prizes for each game and more prizes to raffle off at the end of the event. Each participant will receive one bingo card and a large, tasty slice of pizza to enjoy during the game! Additional Bingo cards can be purchased for \$1 at check-in (max 3 per participant). This event will be St. Patrick's Day themed, so wear your green! **Pre-registration is required! No refunds if cancellation is 48 hours before event.**

Location: Twin Lakes Clubhouse

Code	Day	Date	Time	Fee
205610-01	F	3/8	5:30-7:00pm	\$10/person

"You've Been Egged"

All Ages

"Egg" your friends, neighbors or your own family with a surprise at home egg hunt! One of the Easter Bunny's helpers will hide 20 filled eggs in your front yard and leave a "You've Been Egged" sign on the front door. Egging will take place Monday, March 25 or Tuesday, March 26 between 3:00-6:00pm. **Pre-registration is required! Must live in Palatine or be a Salt Creek Resident.**

Code	Day	Date	Time	Fee
205100-05	M	3/25	3:00-6:00pm	\$16/person \$12/additional child
205100-06	Tu	3/26	3:00-6:00pm	\$16/person \$12/additional child

Flashlight Egg Hunt

Ages: 5-12 yrs

Bring your flashlight and join us for this program at Twin Lakes Recreation Area. Kids will hunt for their own chocolate-filled eggs in the dark and everyone will have a chance to win prizes! Kids need to bring their own flashlight and bag. **Must pre-register for this event!**

Location: Twin Lakes North Entrance (Use Frontage Road)

*5-7 Yrs. Meet at Pavilion near Playground

**8-12 Yrs. Meet at North Parking Lot

Code	Ages	Day	Date	Time	Fee
205100-03	5-7*	W	3/27	7:45-8:15pm	\$10NR/\$8R
205100-04	8-12**	W	3/27	7:45-8:15pm	\$10NR/\$8R



Lunch with the Bunny

Ages: 2+ yrs

Families join us for a delicious lunch with the Easter Bunny! There will also be a coloring contest, egg decorating and a fun craft! Don't forget your camera for a picture with the Bunny. This event fills quickly!

Pre-registration is required! No refunds if cancellation is 48 hours before event.

Location: Twin Lakes Clubhouse

Code	Day	Date	Time	Fee
205200-01	F	3/29	11:00am-12:30pm	\$19NR/\$17R per person
205200-02	F	3/29	1:00-2:30pm	\$19NR/\$17R per person

Easter Egg Hunt

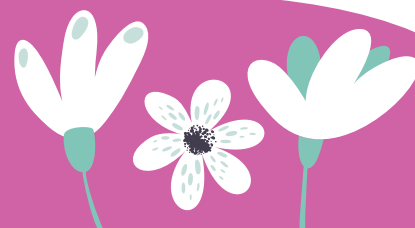
Ages: All

Salt Creek Park District's Annual Easter Egg Hunt will be held on Saturday, March 30. All ages are welcome and the event is FREE! Please bring your own bag or basket to collect eggs. Egg Hunt starts promptly at 10:00am, with the youngest age group first.

Location: Twin Lakes Field (North Parking Lot)

Day	Date	Time	Fee
Sa	3/30	10:00am	Free

Event supported by the Palatine Lions Club



SPECIAL EVENTS

DRAFT DAY Watch Party!

NEW

Ages: 5 & up

Join us for family fun as we watch the first night of the 2024 NFL Draft, enjoy great food and drinks at the Salt Creek Sports Center! We will have football-themed activities for the whole family. Each person will receive a raffle ticket upon entry to be included in our raffle drawing during every 5th draft pick! Our mascot, Saltey will make an appearance for photos. Cash bar and specialty drinks will be available. Admission, food and games are included. Pre-registration is required.

Location: Salt Creek Sports Center, 647 Consumers Ave., Palatine

Code	Day	Date	Time	Fee
203225-03	Th	4/25	6:00-9:00pm	\$20 (Adults) \$10 (5-12 yrs)



Color Run (2K)

Ages: 6+ yrs

Join us for a fun color run! Participants will run a 2K around the perimeter of Salt Creek Lane while volunteers throw colored chalk as they race by. All participants receive a t-shirt, goodie bag and bragging rights. Race will run rain or shine.

Register by April 26 to guarantee a t-shirt!

Date: Saturday, May 11

Code	Ages	Time
205500-01	12-14	8:30am
205500-02	9-11	8:40am
205500-03	7-8	8:50am
205500-05	6+	9:10am - Family Run

Location: Salt Creek Lane - 3350 Salt Creek Lane, Arlington Heights

Fee: \$25/person through 4/1
\$30/person through 4/2-5/10
\$35/person 5/13 Race Day (Cash or Zelle only)

Spring Trunk Sale!

Ages: All

Have fun and turn your unwanted household items, tools, clothes and more into cash. Adults, clean out that basement, attic, and garage. Kids, clean out those closets! Get rid of all that "stuff" you no longer want. Parking space is included to sell out of your trunk or back of your car! Space is limited, so sign-up today! **Please bring a table to setup outside the trunk of your car. Pop-up tents are NOT PERMITTED.**

Location: Twin Lakes Main Parking Lot

Code	Day	Date	Time	Fee
205400-01	Sa	5/4	9:00am-2:00pm	\$28/parking spot



Supported by:

PALATINE BANK
& TRUST*
A WINTRUST COMMUNITY BANK

SPECIAL EVENTS

FISHING DERBY!



31st Annual Fishing Derby

Ages: All

Come and enjoy a great family event and start your fishing tales now! There will be awards, prizes and a tagged fish just waiting to be caught for a special prize. Bait will be available for purchase. Please bring a bucket for fish.

Location: Twin Lakes Pavilion 2 (Pavilion closest to Rt. 53)

Code	Day	Date	Time	Fee
205700-01	Sa	6/1	8:00-11:30am	\$6

Fee: \$6 (pre-registration) / \$8 (walk-in day of event)



Supported by:

The Knuerr Family



TWIN LAKES



NEW

PALATINE, ILLINOIS

Get ready to challenge yourself!

For ages 15+

Participants will participate in a 700-meter swim in Donut Lake, followed by a 5K run. Top 3 participants male & female in each age category will win a medal. Race will be chip timed.

Please register online at [Active.com](https://www.active.com).

Location: Twin Lakes, 1200 E. Twin Lakes Dr. Palatine

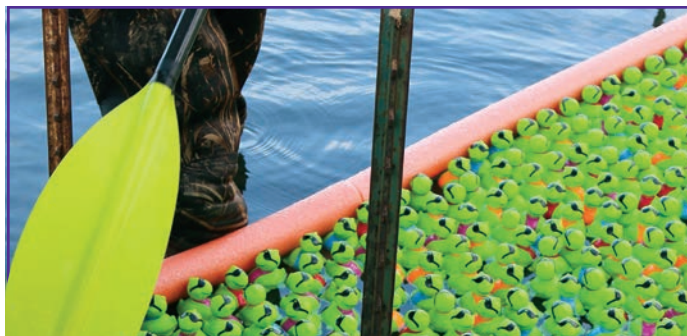
Day	Date	Time	Fee
Su	6/23	7:30am	\$65 by 5/1 \$75 after 5/1



Supported by:

PALATINE BANK
& TRUST®
A WINTRUST COMMUNITY BANK

SPECIAL EVENTS



TURTLE TREK

August 2, 6:30pm

Fun for all ages!

Don't miss our annual Turtle Trek Race and Raffle! If you adopt a turtle, you will have a chance to win great prizes as our fleet of plastic turtles will race in Donut Lake! The grand prize winner will receive \$500! Don't worry if your turtle doesn't come in first place - we'll have over 40 other prizes you could win from our generous sponsors!

If you would like to become a sponsor for this event, see the General Information tab/Sponsorship Opportunities at saltcreekpd.com.

Location: Twin Lakes Recreation Area

Code	Day	Date	Time	Fee
215000-01	F	8/2	6:30pm	\$5/turtle
215000-02				\$20 snap pack (5 turtles)



2024 YOUTH OBSTACLE COURSE

REGISTER EARLY AND SAVE!



Youth Obstacle Course Race (OCR) September 2024 • 9:00am

This 1.25-mile course takes your adventurous child on a fun course along the perimeter of Twin Lakes Golf Course where they will enjoy over 15 man-made and natural obstacles to challenge their physical ability and determination.

Code	Age	Code	Age
100115-04	Boys, 7-8 yrs	100115-01	12-14 yrs
100115-05	Girls 7-8 yrs	100115-06	6 yrs+ & Family Run
100115-02	Boys, 9-11 yrs	100115-07	SRAs
100115-03	Girls, 9-11 yrs		

More information will be available at saltcreekpd.com

Supported by:

PALATINE BANK
& TRUST*
A WINTRUST COMMUNITY BANK

SUMMER MUSIC CONCERTS



Friday Night Rockin' the Lakes!

Enjoy these exciting bands on the deck overlooking Donut Lake at Twin Lakes every other Friday night starting in June! Seating is first come, first served. RoccoVino's will be open for a variety of food and drink options available for purchase. No outside food or drinks are allowed on the deck or patio areas.

June 7, 7:00-9:00pm • Bucket Number 6

Palatine's own Bucket Number 6 is an exciting cover band entertaining crowds since 2003. Their unique repertoire includes a tribute to 70s Classics, 80s Pop Rock, 90s Rock and country. Combining excellent musicianship, bone-crushing vocals, and a contagious stage energy, BN6 will keep you dancing, rocking, singing along and having fun! bucketnumber6.com

June 21, 7:00-9:00pm • Leaving Scarlet

Leaving Scarlet is a seasoned group of musicians that are committed to bringing you the best in live entertainment. They are a high energy rock/dance band that plays classic to current hits you know and love. leavingscarlet.com

July 5, 7:00-9:00pm • Prairie Station

Prairie Station is the Chicago suburb's most exciting modern country band playing covers of the hottest music from today, as well as yesterday's country staples. You'll hear favorites like Luke Bryan and Jason Aldean on up to Miranda Lambert, Sugarland, Lady Antebellum, even some Johnny Cash and much more! prairiestationband.com

July 19, 7:00-9:00pm • Industrial Drive

Industrial Drive is a combination of your favorite playlist and the songs you turn up on your radio. They play a wide variety of popular rock music from the 1970s through the 2010s. You'll hear songs from bands like Cream, Duran Duran, Foo Fighters, Pearl Jam, Depeche Mode, Collective Soul, The Killers, Matchbox 20, Muse, The Cure, Bon Jovi, and more. Industrial Drive is a fresh, eclectic, and fun way to hear real live rock music. industrialdrive.net

August 2, 7:30-9:30pm • Oh Yes! (after Turtle Trek Race)

The new and hottest band to hit the streets. Oh Yes! is a band that delivers Real. Fun. Live. Music that will have you on your feet singing along on every song! This will be a night to remember! Oh Yes! ohyesband.com

Wednesday Music on the Deck!

New this summer - Three Wednesday night concerts! Make it a great evening event-place your order with RoccoVino's inside the Clubhouse and take it outside to enjoy some relaxing music on the deck.

June 12, 6:00-8:00pm • Jim Bulanda Presents a Tribute to Frank Sinatra, Dean Martin & More

Chicagoland's Jim Bulanda can easily step into the shoes of any major Las Vegas entertainer. He is a vocalist who is most famous and appreciated for his impressions of Dean Martin and of course, the 'Chairman of the Board,' Frank Sinatra. tributetofrank.com

June 26, 6:00-8:00pm • Ryan Shephard

Ryan Shephard is known for his ability to captivate crowds through his extensive background in a multitude of genres, and his lifelong tenure as a guitarist and vocalist. Ryan has helped to create and perform in award winning bands, cover bands, jazz ensembles and more. ryanshephardmusic.com

July 10, 6:00-8:00pm • Jacquelyn Vale

Get ready for songstress Jacquelyn Vale to take you on a musical journey with an eclectic blend of Jazz, Soul, Rock 'n Roll and Country Classics from past and present. Jacquelyn's silky smooth, soulful voice, early musical experiences and influences make for a show you won't want to miss. jacquelynvale.com



SALT CREEK SPORTS CENTER



RENTAL INFO

Full Facility Rental Available For:

- Dryland Training (Lacrosse, Softball, Football & Basketball)
- Team Practices
- Soccer Training
- Corporate Outings
- Sporting Events* (*rates may vary upon event*)
- Birthday Parties

Facility Amenities Include:

- 180' x 80' open floor
- 30' ceilings
- Sport Court surface
- Smaller meeting rooms
- 3 Big screen televisions
- Full sound system



saltcreeksportscenter.com

Rat Hockey

Ages: 16+ yrs

Rat hockey gives players the opportunity to play a pickup game or simply work on their skills in an unstructured, unsupervised and stress-free environment. All sessions require full hockey equipment.

Visit saltcreeksportscenter.com for latest updates.

Location: Salt Creek Sports Center

Day	Date	Time	Fee
Sa	Weekly	9:00-10:30pm	\$8

Adult Inline Hockey Leagues

A regular season and playoff games will be included in all leagues. Participants must provide their own equipment and game jerseys.

League	Day	Time
30+	Tu/Th*	6:30-11:30pm
40+ Draft	Tu/Th	6:30-11:30pm
18+	Sa	5:00-11:30pm
18+	Su	8:30am-11:00pm

Fee: League fees vary with number of teams and games.

**Games will be played Wednesdays, as needed.*

Adult Floor Hockey Leagues

A regular season and playoff games will be included in all leagues. Participants must provide their own equipment and game jerseys.

League	Day	Time
18+	M	6:30-10:00pm
18+ Draft	W	6:30-9:00pm

Fee: League fees vary with number of teams and games.

Youth Inline Hockey Leagues

For players under 18 years old, the Salt Creek Sports Center is home to the Illinois Roller Hockey League run by Dan Costanza. For more information check out irhlhockey.com.



Live Barn - Streaming for Games!

Enjoy our hockey games live through Live Barn streaming services.



FACILITY RENTALS

Outdoor Pavilion Rentals

Rose Park, Grealish Park and South Park

Reservations and a rental fee are required to secure usage of any of the Park District's picnic pavilions. Pavilions are available for rent at the following parks: Grealish Park, South Park, and Rose Park.

A maximum of 40 people throughout the rental time is allowed. 6-hour time slots.

Fees are non-refundable once an application is processed. If a rental request is made two weeks prior to the rental date, only cash or charge will be accepted. There will be **NO LIQUOR OR CANNIBIS** allowed in the parks. Tents or volleyball nets cannot be erected anywhere in the parks. Carnival games or inflatables are not allowed. Renter must be present at all times during the rental or deposits will be lost and credit cards charged. Please refer to the application for Park Regulations.

Residents may reserve pavilions for the 2024 season beginning on January 8. Non-resident pavilion rental reservations will be taken starting on January 15. A credit card number will be held for the deposit. Credit cards will only be charged if a violation of the rental agreement occurs.

PARK LOCATION	FEE
Grealish: 1345 Joyce Ave, Palatine	\$130/\$65
Rose: 530 S. Williams Ave, Palatine	\$130/\$65
South: 2004 S. Theda Ln, Rolling Meadows	\$130/\$65

Portable restrooms available May through October.

Call the Twin Lakes Clubhouse at 847-934-6050 ext 202 or email cfracassi@saltcreekpd.com for available dates and details on how to book your next gathering!



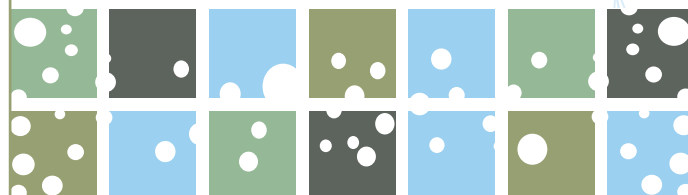
Tent Rental at Twin Lakes



Rose Park Room Rental

Plan your next **PARTY** with us!

Our new Multipurpose Room will be perfect for birthday parties, baby or bridal showers, business meetings or other events! Call the Rose Park office for more information at 847-259-6890 or email jdodson@saltcreekpd.com. **Rentals will start Fall 2024!**



FACILITY RENTALS

Twin Lakes Rentals

Our clubhouse was designed with you in mind! With a view overlooking our 9-hole golf course on one side and a beautiful view of Donut Lake on the other, the Twin Lakes Clubhouse is a great site for your next event.



TWIN LAKES

Rent our Twin Lakes deck for your wedding ceremony or wedding pictures.

Call Cindy Fracassi at 847-934-6050 ext. 202 for more details.

The clubhouse contains a dining area and a multi-purpose room for programming or rentals. Reservations may be made for the 2024 summer season beginning January 8, 2024 for Salt Creek Park District residents and January 15, 2024 for non-residents.

Rental Information & Fees

A credit card number is required with booking fee for additional security deposit.

FACILITY	AVAILABILITY	CAPACITY	REQUIRED MINIMUM	HOURLY FEE (NR/R)
Multi-Purpose	7 days/week	50 or less (34' x 30')	3 hour rental	\$85/\$75
Outdoor Tent	Monday-Thursday	125 or less	3 hour rental	\$100/\$90
	Friday-Sunday	125 or less	3 hour rental	\$110/\$100
Pavilions 1 and 2	7 days/week	50 or less	--	\$200/\$100 per time slot*
	Holiday Pricing	50 or less	--	\$225/\$125 per time slot*
	*Pavilion Time Slots: April & October (all day) • May-August (8am-2pm or 3pm-9pm) • September (8am-2pm or 3pm-8pm)			

An additional hour for setup and takedown is included in the rental fee. Special rates are available for community organizations. Contact Twin Lakes Clubhouse at 847-934-6050 ext. 202 or cfracassi@saltcreekpd.com for available dates and details for booking your next gathering!

Dates Available: 5/1/2024-10/31/2024. Portable restrooms are available April through October.

Twin Lakes Catering

HAVE YOUR NEXT EVENT AT TWIN LAKES RECREATION AREA!

Hosting an event? Plan it at Twin Lakes! Whether it's a meeting, holiday party, birthday, wedding, shower or any special occasion, **RoccoVino's** will exceed all of your catering expectations. From barbecues and picnics to full course meals, RoccoVino's prepares fresh dishes ranging from creative pasta specialties and signature entrees to appetizers, sandwiches, wraps, salads, desserts and more. Our vast menu options and personalized service are sure to delight you and your guests with packages to suit any taste and budget. Packages start at just \$18/ person and can be customized to suit your needs. We also offer full bar options and custom cake orders. **Choose from...**

- Classic Buffet
- Traditional Family Style
- Elegant Plated Entrées
- Catered Pavilion Picnics



Our Event Planners can offer creative ideas on everything from menu planning to decorations and entertainment. We will help make your party a success and have your guests raving from the start. For more information on scheduling a tour or booking one of our beautiful private rooms or pavilions, contact an event planner at 847-934-6050 ext. 202 or cfracassi@saltcreekpd.com.



TWIN LAKES GOLF COURSE

If you have time to spare, Twin Lakes Golf Course is a great place to get in a quick round of golf – early morning, mid-day or after work!

Salt Creek Rural Park District's Twin Lakes Golf Course is one of Chicagoland Golf's top 3 executive 9-hole golf courses. During the summer, play begins at sunrise seven days a week; open play is available except during league play, private outings and tournaments.

Residents of Salt Creek Rural Park District must have a photo identification card to receive resident rates. To renew or acquire a card for the first time, please bring a current form of address verification (for example, a current utility bill) to the Twin Lakes Recreation Area at 1200 E. Twin Lakes Drive in Palatine. If you have questions about who is a Salt Creek Park District resident, please see page 5.

These cards allow you and your family members reduced rates on most Park District programs and resident rates for golf and fishing at the Twin Lakes Recreation Area! These cards are also necessary to receive reciprocal fees for programs at Rolling Meadows, Arlington Heights and Palatine Park Districts. Please refer to the Reciprocal Agreement on page 41.

The price for each card is \$4. Your 2024 I.D. card expires December 31, 2024. Again, as a reminder, you must bring in a valid form of identification such as a tax or utility bill to receive your new card.

Daily Fees

Saturday, Sunday, Holidays	9 Holes	Replay
Greens Fees	\$19	\$13
Weekdays		
Adult	\$16	\$11
Junior (12 yrs & under)*	\$14	\$11
Senior (55 yrs & older)*	\$14	\$11

Residents will receive a 20% discount off greens fees. Resident rates apply to those individuals who have a Salt Creek Park District I.D.

Tee Time Reservation Policy

Golf reservations may be made one week in advance. Cancellations must be made 24 hours in advance of your tee time. **Tee time reservations are available online!**

Call the Pro Shop at 847-934-6050 ext. 204 to reserve a Tee time.

Walk-On

Walk-ons will receive the first tee time available to accommodate the number of golfers in the group. Golfers should check-in no less than 15 minutes before their tee time or risk losing their tee time and being charged for missing their reservation. **The Twin Lakes staff reserves the right to pair golfers together. To achieve maximum use of the golf course, foursomes will be required when play is heavy.**



Twin Lakes Jr. Golf Regulations

Twin Lakes golf policy encourages youth and adult participation. Golfers 12 years of age and under may play at any open tee time when accompanied by an adult. Please don't be offended if we ask for an I.D. Resident rates apply to those individuals who have a Park District I.D.

Golf Course & Driving Range Hours

Season Starts – April 1	Daylight Hours
April 1-30	8:00am-8:00pm
May 1 - September 2	7:00am-9:00pm
September 3 - October 31	8:00am-8:00pm

Last bucket sold half hour prior to close.

Range Fees

Small Bucket (35 golf balls)	\$9
Large Bucket (70 golf balls)	\$13

Please note: You may purchase an E-Key and put any value of your choice on it. Works like a "debit card".

Equipment Rental	9 Holes	Replay
Pull Cart	\$3	\$1
Gas Cart - Single Rider	\$15	\$8
Gas Cart - Double Riders	\$30	\$8/pp
Wilson Club Rental Set (<i>limited quantity available</i>)	\$10	\$10

Please note: Drivers must be at least 19 years old.

Purchase your Players Card for \$95 and start SAVING today!

- Play 9 holes any day of the week, anytime, for only \$11
- \$9 replay
- Receive 10% off Pro Shop Merchandise, throughout the season*
- \$2 off a pull cart or gas cart
- Bring a friend and they will receive a Buddy Discount!
- Card is good for the 2024 season only

**Restrictions may apply.*

TWIN LAKES GOLF COURSE

Rain Policy for Golf

Rain checks will be given at staff's discretion.

No rain checks will be issued after the 3rd tee.

GOLF POLICIES & RULES

Shoe Policy for Golf

The Twin Lakes Golf Course requires all players to wear soft spiked or cleatless shoes to help maintain the quality of our greens.

Golf Outings (36 max) & "Golf-Centric" Events

Our experienced staff and teaching pros know how to effectively plan, budget, manage and implement a fun-filled and memorable golf event. Morning, afternoon or early evening outings, pre-outing clinics, or private group clinics (4 minimum) can be tailored to meet your needs! For more information or to book an event, call (847) 934-6050 ext.205.

Golf Course Rules

1. Each person on the course must have a paid receipt.
2. No walkers (or caddies) allowed on the course.
3. Each person on the course must have their own set of clubs and bag. Club sharing is not allowed.
4. Children ages 11 and under must play with an adult.
5. Slower players must allow those following to play through.
6. Shirt and appropriate shoes must be worn on course. No metal spikes.
7. Players must use a tee for all tee shots.
8. Foursomes will be required when play is heavy.
9. No rain checks issued after 3rd hole or during twilight hours.
10. Players must seek shelter when the Thorguard lightning safety horn is sounded. Round may be resumed after all clear signal is given.
11. Golfers are liable for damage to surrounding property or injury to other golfers.
12. On the 1st and 2nd tee, after 2 balls in water, players must play ball from drop area.
13. Players are not permitted to play more than one golf ball during round.
14. No outside alcohol may be brought into park or taken on golf course.
15. Please keep pull carts off the greens and aprons.
16. Keep gas carts off greens and tee boxes. Drivers must be at least 19 years old.
17. The Park District reserves the right to close the course for any general safety concerns.
18. The Park District may establish other rules and procedures deemed necessary for the operation of the facility.

Play Better Golf Academy

Play Better Golf Academy at Twin Lakes provides some the highest quality golf instruction available in the Chicagoland area. We offer a wide range of Group Classes for students of all ages (4-94) and playing levels; beginners through advanced. Our cadre of instructors, led by Teaching Professionals Chuck Lynch, **PGA** (PBGA Founder & Director of Instruction) and David Hannon, **PGA** (PBGA Professional Instructor) are 'ALL IN' and ready to GO!

Chuck Lynch possesses over 35 years of teaching experience; he has won the Illinois **PGA** Teacher of the Year Award, as well as having been nominated seventeen times by his peers. In addition Chuck is a past recipient of Golf Digest Magazine's prestigious Top Ten Teachers in the State of Illinois Award.

David Hannon has played competitively for over 20 years in **PGA** sanctioned events, winning multiple individual and team **PGA** Section Tournaments from Ohio, Indiana, and Illinois. He has also advanced to National **PGA** Championships multiple times. In addition, he possesses over 25 years of teaching experience.

Matt Lynch is PBGA's on-site Professional Instructor. Matt began developing our program at Twin Lakes in 2018. He is a "home-grown" talent of Palatine H.S. (4 year varsity golf team starter) and a graduate of Carthage College, where he earned the ranking as a top three player. The quality of his game has enabled him to play on the Asher Professional Golf Tour.

Matt continues to maintain professional relationships with local High School and College Coaches. In addition to possessing great playing skills, Matt has acquired a deep understanding of PBGA's "Building Blocks of the Golf Swing" teaching method; instilled into him as a child, when he began learning golf from his Dad.

Other members of the PBGA Instructional team:

- Jim Damato - PBGA Director, Player Development
PBGA Instructor; 3 years
- Lance Seamans - Director, Golf Technology
PBGA Assistant Instructor

Individual Instruction

Play Better Golf Academy offers **year-round** individual instruction.

May 1-Oct 31: Twin Lakes Golf Course, Range and Practice Areas

Nov 1-Apr 30: PBGA Learning Lab; in the Salt Creek Sports Center located off N.W. Highway (IL RT. 14) at 647 S. Consumers Ave. Palatine.

Our Learning Lab is equipped with a **SKY TRAK** swing bay simulator and launch monitor, delivering real-time 3D shot analysis and ball flight data.

GOLF LEAGUES AT TWIN LAKES

SUMMER GOLF LEAGUES

Payment and Refund Policy

Registrants must have a completed registration form and full payment must be made for each group member. Should you cancel any time after registering, you will receive a refund of your registration payment **minus a \$20 per participant administration fee**. Should you cancel once leagues have begun play, you will receive a prorated portion of your registration fee minus a \$20 per participant administration fee. No refunds will be given halfway through the program. Makeup dates will be available when a session is cancelled. Please note that makeups can only occur within the current session. Any charges will be posted to your charge account.

2024 Golf Leagues (15 weeks)

Join us for our 15-week summer golf leagues! Our golf leagues are run by the Twin Lakes Facility Manager. All league fees include course greens fees, weekly prizes for closest to the pin, and season trophies to be awarded to top finishers. We will wrap the season up with a fabulous awards banquet. Registration is limited. Sign-up now at the clubhouse!



League	Code	Date	Time	Day	Age	Length	Fee	Make-up dates will be available when there is inclement weather or the session is canceled. No golf on 7/2 & 7/3
Men's Tu-pm	511100-01	4/23-8/6	4:40-6:30pm	Tu	18+	15 weeks	\$300NR/\$275R	
Ladies Tu-pm	511100-03	4/23-8/6	3:30-4:30pm	Tu	18+	15 weeks	\$300NR/\$275R	
Ladies W-am	511100-05	4/24-8/7	8:30-10:00am	W	18+	15 weeks	\$300NR/\$275R	
Ladies W-pm	511100-07	4/24-8/7	3:30-6:30pm	W	18+	15 weeks	\$300NR/\$275R	

League Banquet

All summer adult leagues will come together for one banquet held on Thursday, August 22, 2024 at 5:30pm at Twin Lakes Clubhouse.



GOLF LESSONS AT TWIN LAKES

SUMMER GOLF LEAGUES & LESSONS

Pee Wee Golf Academy (4 weeks)

Ages: 4-6 yrs

This is a program for the pee wees and their parents. **Parents will be highly involved.** Each week the child will learn a new golf skill that the parent and child will practice together. The skills learned weekly will build the golf swing. Minimum of 4 students per class.

Code	Day	Date	Time	Fee
210500-01	M	4/29-5/20	4:00-4:30pm	\$100
210500-02	M	4/29-5/20	4:45-5:15pm	\$100
210500-03	M	4/29-5/20	5:30-6:00pm	\$100
210500-04	F	5/3-5/24	4:00-4:30pm	\$100
210500-05	F	5/3-5/24	4:45-5:15pm	\$100
210500-06	F	5/3-5/24	5:30-6:00pm	\$100
210600-01	M	6/3-6/24	4:00-4:30pm	\$100
210600-02	M	6/3-6/24	4:45-5:15pm	\$100
210600-03	M	6/3-6/24	5:30-6:00pm	\$100
210600-04	F	6/7-6/28	4:00-4:30pm	\$100
210600-05	F	6/7-6/28	4:45-5:15pm	\$100
210600-06	F	6/7-6/28	5:30-6:00pm	\$100
210700-01	M	7/8-7/29	4:00-4:30pm	\$100
210700-02	M	7/8-7/29	4:45-5:15pm	\$100
210700-03	M	7/8-7/29	5:30-6:00pm	\$100
210700-04	F	7/12-8/2	4:00-4:30pm	\$100
210700-05	F	7/12-8/2	4:45-5:15pm	\$100
210700-06	F	7/12-8/2	5:30-6:00pm	\$100
210800-01	M	8/5-8/26	4:00-4:30pm	\$100
210800-02	M	8/5-8/26	4:45-5:15pm	\$100
210800-03	M	8/5-8/26	5:30-6:00pm	\$100
210800-04	F	8/9-8/30	4:00-4:30pm	\$100
210800-05	F	8/9-8/30	4:45-5:15pm	\$100
210800-06	F	8/9-8/30	5:30-6:00pm	\$100



Bogey Junior Golf Academy (4 weeks)

Ages: 7-10 yrs

Play Better Golf Academy classes stress the fundamentals of the golf swing utilizing our "Building Blocks of the Golf Swing" teaching method. Clubs will be provided if needed. Minimum of 4 students per class.

Code	Day	Date	Time	Fee
210100-01	Tu	5/7-5/28	4:45-5:45pm	\$175
210100-02	Tu	5/7-5/28	6:00-7:00pm	\$175
210100-03	W	5/8-5/29	6:30-7:30pm	\$175
210100-04	Th	5/9-5/30	4:45-5:45pm	\$175
210100-05	Th	5/9-5/30	6:00-7:00pm	\$175
210200-01	Tu	6/4-6/25	3:30-4:30pm	\$175
210200-02	Tu	6/4-6/25	4:45-5:45pm	\$175
210200-03	Tu	6/4-6/25	6:00-7:00pm	\$175
210200-04	W	6/5-6/26	6:15-7:15pm	\$175
210200-05	Th	6/6-6/27	3:30-4:30pm	\$175
210200-06	Th	6/6-6/27	4:45-5:45pm	\$175
210200-07	Th	6/6-6/27	6:00-7:00pm	\$175
210300-01	Tu	7/9-7/30	3:30-4:30pm	\$175
210300-02	Tu	7/9-7/30	4:45-5:45pm	\$175
210300-03	Tu	7/9-7/30	6:00-7:00pm	\$175
210300-04	W	7/10-7/31	6:15-7:15pm	\$175
210300-05	Th	7/11-8/1	3:30-4:30pm	\$175
210300-06	Th	7/11-8/1	4:45-5:45pm	\$175
210300-07	Th	7/11-8/1	6:00-7:00pm	\$175
210400-01	Tu	8/6-8/27	4:45-5:45pm	\$175
210400-02	Tu	8/6-8/27	6:00-7:00pm	\$175
210400-03	W	8/7-8/28	6:30-7:30pm	\$175
210400-04	Th	8/8-8/29	4:45-5:45pm	\$175
210400-05	Th	8/8-8/29	6:00-7:00pm	\$175



GOLF LESSONS AT TWIN LAKES

Par Shooters Junior Golf Academy (4 weeks)

Ages: 11-15 years

This class is designed for golfers who have had at least 3 years of Twin Lakes golf class experience or the approval from the instructor. It will follow the same format as the Junior Golf Academies of weekly lessons but take your golfer to the next step of understanding the game. Minimum of 4 students per class.

Code	Day	Date	Time	Fee
210900-01	W	5/8-5/29	5:15-6:15pm	\$175
210900-02	W	5/8-5/29	4:00-5:00pm	\$175
210900-03	W	6/5-6/26	5:15-6:15pm	\$175
210900-04	W	6/5-6/26	4:00-5:00pm	\$175
210900-05	W	7/10-7/31	5:15-6:15pm	\$175
210900-06	W	7/10-7/31	4:00-5:00pm	\$175
210900-07	W	8/7-8/28	5:15-6:15pm	\$175
210900-08	W	8/7-8/28	4:00-5:00pm	\$175

Co-ed Jr. Learn to Play on Course (4 weeks)

Ages: 10-15 yrs

Juniors who can demonstrate a fundamentally sound golf swing to the instructor and are ready to take their game to the course. Minimum of 3 students per class.

Code	Day	Date	Time	Fee
210150-01	M	6/3-6/24	10:00am-12:00pm	\$225
210150-02	M	6/3-6/24	12:30-2:30pm	\$225
210150-03	M	7/8-7/29	10:00am-12:00pm	\$225
210150-04	M	7/8-7/29	12:30-2:30pm	\$225
210150-05	F	6/7-6/28	10:00am-12:00pm	\$225
210150-06	F	6/7-6/28	12:30-2:30pm	\$225
210150-07	F	7/12-8/2	10:00am-12:00pm	\$225
210150-08	F	7/12-8/2	12:30-2:30pm	\$225



Co-ed PGA Junior Golf Camps (3-Day Sessions)

Ages: 8-13 yrs

This class is a three-day total immersion into golf, covering fundamentals from putting through driving. Students will learn the skills; practice the skills; and then learn how and when to use those skills against one another in team competitions. Camp concludes with a 9-hole team event. **Please bring your own lunch daily or you may purchase lunch from the Concession stand.** Each golfer will be provided with a welcome tee gift. Minimum of 4 students per class.

Day 1: Short game and short game team competitions

Day 2: Half swing, full swing iron play and team competitions

Day 3, 8:30-9:30am: Full swing with metal woods and driving team competitions

Day 3, 10:00am-12:00pm: 9 holes of golf

Code	Day	Date	Time	Fee
212100-01	Tu-Th	6/4-6/6	8:30am-12:00pm	\$280
212100-02	Tu-Th	6/11-6/13	8:30am-12:00pm	\$280
212100-03	Tu-Th	6/18-6/20	8:30am-12:00pm	\$280
212100-04	Tu-Th	6/25-6/27	8:30am-12:00pm	\$280
212100-05	Tu-Th	7/9-7/11	8:30am-12:00pm	\$280
212100-06	Tu-Th	7/16-7/18	8:30am-12:00pm	\$280
212100-07	Tu-Th	7/23-7/25	8:30am-12:00pm	\$280
212100-08	Tu-Th	7/30-8/1	8:30am-12:00pm	\$280
212100-09	Tu-Th	8/6-8/8	8:30am-12:00pm	\$280
212100-10	Tu-Th	8/13-8/15	8:30am-12:00pm	\$280

Twin Lakes Junior Golf League (9 weeks)

Ages: 7-14 yrs

Join us for our 9-week summer Junior Golf League! Our league is run by the Facility Manager. The league is designed for players with intermediate golf experience. Our rangers will be out on the course supervising league play and assuring course etiquette is followed.

There is no instruction in the league. Golfers will play in teams of four, and each will receive a hot lunch for the end of the season party! In addition, each player will receive a tee gift for signing up.

No golf 7/4

Code	Day	Date	Time	Fee
511200-03	Th	6/6-8/8	9:00-11:30am	\$165NR/\$135R



GOLF LESSONS AT TWIN LAKES



Adult Co-ed Short Game Academy (4 weeks)

Ages: 18+ yrs

Students will be instructed in the pre-swing and in-swing fundamentals of these skills. Minimum of 4 students per class.

Week 1: Putting

Week 2: Chipping

Week 3: Pitching and lobbing

Week 4: Bunker play

Code	Day	Date	Time	Fee
211400-01	Th	5/9-5/30	7:15-8:15pm	\$200
211400-02	Th	6/6-6/27	7:15-8:15pm	\$200
211400-03	Th	7/11-8/1	7:15-8:15pm	\$200
211400-04	Th	8/8-8/29	7:15-8:15pm	\$200

Adult Co-ed After Work Under the Lights

(4 weeks)

Ages: 18+ yrs

Students will be on the driving range working on pre-swing fundamentals and in-swing fundamentals for each club. Each class is one hour; four hours of total instruction. Minimum of 4 students per class. Enjoy a special treat the last week of class on us!

Class 1: Short Irons

Class 2: Mid and Long Irons

Class 3: Hybrids and Fairway Metals

Class 4: Driver

Code	Day	Date	Time	Fee
211400-09	M	4/29-5/20	6:30-7:30pm	\$200
211400-10	F	5/3-5/24	6:30-7:30pm	\$200
211400-11	F	6/7-6/28	6:30-7:30pm	\$200
211400-12	M	6/3-6/24	6:30-7:30pm	\$200
211400-13	F	7/12-8/2	6:30-7:30pm	\$200
211400-14	M	7/8-7/29	6:30-7:30pm	\$200
211400-15	F	8/9-8/30	6:30-7:30pm	\$200
211400-16	M	8/5-8/26	6:30-7:30pm	\$200

Ladies Only Golf Academy (4 weeks)

Ages: 18+ yrs

Ladies, start the weekend off early and give golf a try! Learn so that you can play with family, friends and business associates. Four weeks focused on the fundamentals of the golf swing from the putter through the driver. Minimum of 4 students per class.

Code	Day	Date	Time	Fee
211400-21	Sa	4/27-5/18	9:00-10:00am	\$200
211400-22	Sa	6/1-6/22	9:00-10:00am	\$200
211400-23	Sa	7/13-8/3	9:00-10:00am	\$200
211400-24	Sa	8/10-8/31	9:00-10:00am	\$200

PRIVATE AND SEMI-PRIVATE GOLF LESSONS

Take your golf game to the next level with semi-private and private golf instruction with Matt Lynch.

For more information, visit saltcreekpd.com.

To schedule a lesson, please call Ashley Medley at 847-934-6050 x205.



FISHING AND BOATING

About Donut Lake

Donut Lake is a 10-acre quarry lake. The average depth is 20 feet with the deepest spot measuring 40 feet deep. The main game fish in the lake are largemouth bass. It is not uncommon for anglers to catch largemouth bass weighing 4-6 pounds. There are also healthy populations of bluegill, black crappie, yellow perch, walleye, and catfish in the lake. Each fall, the fishery is sampled via electro fishing and stocking recommendations are made for the following year based on the result. Every spring, Donut Lake is stocked with various sizes and species of fish to keep the lake healthy.

Fishing Fees

In addition to a valid Illinois fishing license, anglers must have a current Twin Lakes fishing pass. Fishing passes may be purchased for the day or for the season. The daily fishing passes are good for the day. Once purchased, the angler will be given a dated wrist band that must be worn while fishing. Anglers that want to fish the lake more frequently would benefit from purchasing a yearly fishing pass. For a one-time fee, a yearly fishing pass permits the angler unlimited fishing throughout the year the pass was purchased for. Daily and yearly fishing passes are available in the Twin Lakes pro shop. Group rates are available by calling the pro shop at (847) 934-6050. Ask about our pedal fishing boat rentals!

Daily	Resident	Non-Resident
Family (up to four people)	\$7	\$11
Adult	\$5	\$7
Youth	\$4	\$5
Season Pass (single User)	\$30	\$40
Family Season Pass (up to 4 people)	\$45	\$65

Boating

The Park District has paddleboats and kayaks available for rental to individuals 16 years of age and older. Participants 15 years and younger must be accompanied by an adult. Life jackets are provided and must be worn at all times. **Boats may not be reserved in advance. All boating hours are weather and crowd dependent.**

Boating Hours

Park patrons CANNOT use their own boats or motorized boats on either of the lakes in Twin Lakes. Fishing boats are available for rental during the spring, summer and fall. The boat dock may have to be closed due to weather conditions (wind, storms, etc.)

May 1-31	Weekends only, 11:00am-6:00pm
June 1 - August 11	7 days per week, 11:00am-8:00pm
August 12 - October 1	Weekends only, 11:00am-6:00pm

Boat Rentals

Rental Time	Weekday	Weekend
1/2 Hour	\$5/person	\$6/person
1 Hour	\$6/person	\$7/person
2-5 Years Old	\$3/person	\$3/person
Infants (1 year old)	Free	Free

Boating Rules & Regulations

- A driver's license is required to show pro shop attendant.
- Life jackets must be worn at all times by all participants.
- Renters must be 16 years or older.
- Riders must remain seated at all times.
- Park staff may suspend rental privileges for failure to comply with the rules; deposits are also forfeited.
- No alcohol allowed on boats.
- Docking boat on island or shoreline is prohibited.

Kayak Lessons

Ages: 13 & Up

This class is for beginners or those who would like a refresher! This is an easy, fun class and a great way to get acquainted with kayaking. Experienced instructors teach you the basic skills to have fun and be safe in a logical, thorough, step-by-step process.

Registration deadline is one week prior to the class date.

Location: Twin Lakes Boat Dock
Instructor: Mike Pond, ACA Kayak Instructor

Code	Day	Date	Time	Level	Fee
203354-01	Tu	6/4	6:00-8:00pm	Beginner	\$45
203354-02	Tu	6/11	6:00-8:00pm	Beginner	\$45
203354-03	Tu	6/18	6:00-8:00pm	Intermediate	\$45
203354-04	Tu	6/25	6:00-8:00pm	Beginner	\$45
203354-05	Tu	7/9	6:00-8:00pm	Beginner	\$45
203354-06	Tu	7/16	6:00-8:00pm	Intermediate	\$45
203354-07	Tu	7/23	6:00-8:00pm	Beginner	\$45
203354-08	Tu	7/30	6:00-8:00pm	Beginner	\$45
203354-09	Tu	8/6	6:00-8:00PM	Intermediate	\$45

Private lessons are available upon request. Maximum of 3 people. \$60 per person for 2 hours of tailored instruction. Please call Twin Lakes at 847-934-6050 x 205 to schedule PRIVATE lessons.

Green Flag Flying

Boat dock is open, boats may be rented.

Red Flag Flying

Boat dock is closed; weather, water conditions unsafe for boat rental.

SPRING/SUMMER REGISTRATION

To understand who is considered a Salt Creek Park District Resident, please see page 5.

Hockey Registration

Registrations for hockey leagues are only accepted at the Salt Creek Sports Center, 647 Consumers Avenue in Palatine. Salt Creek Sports Center is located one block west of Williams Avenue, off of Northwest Highway. For more information, call 847-394-8806.

Night Deposit Window

The night deposit slot is located at the entrance of Rose Park. For your convenience, simply drop your registration off after hours and it will be processed the next working day.

Satisfaction Guarantee

At Salt Creek Rural Park District, we are constantly striving to provide you with high quality recreation activities, events and programs. We are confident that you will like these programs – so confident that we will ensure our promise to provide that high quality. The park district guarantees that you will be satisfied with recreation classes, programs and services in which you participate. If you are not completely satisfied, tell us and we will arrange for you to do one of the following:

- Repeat the class at no charge
- Receive full credit that can be applied to any other program
- Receive a refund (see refund guidelines)

Our guarantee is based on fulfilling our promises, delivering the published expectations describing the particular service you have used.

Refunds

All refunds are subject to a \$5 administrative service fee, except under the following circumstances:

- Request for refund is due to a satisfaction issue
- Refund is initiated by the Park District
- Doctor's note is submitted with request
- Exceptions for golf programs (see page 34 for more information)
- No refunds will be given halfway through the program

Check refunds will be mailed. Payment by charge will be refunded to your credit card. Program fees will be prorated from the time of the refund request. Participants can get prorated refunds for medical reasons. But proper documentation must be submitted to the office. Certain restrictions apply to camp, preschool and golf leagues. The satisfaction guarantee does not apply to contractual programs, tickets to entertainment, sport events, golf green fees or inline hockey leagues.

Americans With Disabilities Act (ADA)

Salt Creek Rural Park District will comply with the Americans with Disabilities Act (ADA), which prohibits discrimination in the provision of programs, services or activities to individuals with disabilities. We invite any resident with a special need to contact our staff upon registration so that a smooth inclusion may occur. In addition to the programs in our brochure, our District also provides specialized services for people with disabilities through the Northwest Special Recreation Association (847-392-2848). If you have any questions about the Park District's policy regarding ADA, or believe you have been unfairly discriminated against in the provision of programs, services or activities of the Salt Creek Rural Park District, please contact Diane Hilgers at 847-259-6890. A procedure is available to you for the prompt resolution of your complaint.

Register Online at saltcreekpd.com



- Click the red "Register Now" button at the top of the page.
- Near the top right side of the page select **SIGN IN/REGISTER** or login to your account if you already have an existing account. If you don't have an account please call our office.
- Enter your household details, name, address, DOB, and contact information. Please add any additional members in your household to your account at this point.
- When searching for programs or events:
- At the top of the page select **PROGRAMS AND EVENTS** and either enter the program name or first 6 digits of the code to search for the program.
- Select the program by checking the box, add to selection list or add directly to your cart and checkout with your credit card.

If you have difficulty enrolling or gaining access to your account, please contact the office at 847-259-6890.

4 More Easy Ways to Register



1. **Walk-In:** Come in during business hours and your registration will be processed.
2. **Mail-In:** Mail your complete registration form and payment (check, money order, Visa, MasterCard, AmEx or Discover only) directly to: Salt Creek Park District, 530 S. Williams Ave. Palatine, IL 60074.
3. **Drop-Off:** A night deposit slot is located at the entrance of Rose Park. For your convenience, simply drop your registration off after hours, and it will be processed the next working day.
4. **Fax:** Fax your registration form and credit card payment to: 847-259-9975 (if using fax, please call to verify).



Rose Park Administrative Building: 847-259-6890 / Fax: 847-259-9975

530 South Williams Avenue, Palatine, IL 60074 / Email: office@saltcreekpd.com

Twin Lakes Recreation Area: 1200 East Twin Lakes Drive, Palatine, IL 60074 / 847-934-6050

Salt Creek Sports Center: 647 Consumers Avenue, Palatine, IL 60074 / 847-394-8806

PROGRAM REGISTRATION FORM

Household Last Name:

First Name:

Address:

City:

State:

Zip:

Phone:

Cell:

Email:

CODE	PROGRAM NAME	FEE	PARTICIPANTS FULL NAME	SEX	DATE OF BIRTH
		\$			
		\$			
		\$			
		\$			
		\$			
		\$			

Total Amount Due: \$ _____

Please read this form carefully and be aware that in registering yourself or your minor child/ward for participation in Salt Creek Rural Park District's programs you will be waiving any and all claims for injuries you or your child/ward might sustain.

I acknowledge that there are certain risks of physical injury to participants in the Salt Creek Park District's program(s), and I agree to assume the full risk of any such injuries, damages or loss, regardless of severity, which I or my child/ward may sustain as a result of participating in any activities connected or associated with any such program(s). I hereby fully release and discharge the Park District, its' officers, agents, servants and employees from any and all claims of injuries, damage or loss which may occur due to the participation of myself or my child/ward in any Salt Creek Rural Park District program(s). I further agree to defend, indemnify and hold harmless the Park District its' officers, agents, servants and employees from any and all claims resulting from injuries, damages and losses sustained or arising out of, connected with or in any way associated with the activities of any program(s) that myself or my child/ward participate in. I also understand that photographs and videos are periodically taken of participants while they are engaged in programs, special events and park activities. I give permission to Salt Creek Park District to use these photos in future publications. Participants of virtual recreation classes acknowledge they are responsible for ensuring their environment is safe/free from obstructions and that any use of third-party applications (ie: zoom, Instagram, etc) at their own risk. The Salt Creek Park District welcomes individuals with disabilities into our program. Please describe any special accommodations needed for successful inclusion into the program.

Special Needs: _____ Allergies: _____

THE SALT CREEK RURAL PARK DISTRICT HAS MY PERMISSION TO OBTAIN EMERGENCY MEDICAL ATTENTION WHEN REQUIRED.

I HAVE READ AND FULLY UNDERSTAND THE ABOVE DETAILS AND WAIVER. I RELEASE ALL CLAIMS.

Signature of Participant/Guardian: _____ Date: _____

Payment must be in full at the time of registration. Checks payable to the "Salt Creek Rural Park District." A fee of \$20 will be charged to you for any check returned to the District by the bank for any reason. If using the fax registration, please call to verify receipt.

Registration is also available online at saltcreekpd.com.

Special Registration/Fax restrictions and dates for the following: Golf Leagues, Private Lessons, Preschool, Sand Volleyball, Hockey Leagues/Programs, and Summer Camps

PAYMENT INFORMATION	
Cash: \$	Cardholder's Name:
Check: #	Expiration Date: Card Amount: \$
Visa: <input type="checkbox"/>	Cardholder Signature: _____
Mastercard: <input type="checkbox"/>	
Discover: <input type="checkbox"/>	
AMEX: <input type="checkbox"/>	
PLEASE DO NOT EMAIL CREDIT CARD INFORMATION	

Credit Card #: _____ - _____ - _____ - _____

RECIPROCAL AGREEMENTS

Reciprocal Agreements


The Salt Creek Rural Park District has a reciprocal agreement with Arlington Heights, Rolling Meadows and Palatine Park Districts. Since the Salt Creek Rural Park District does not offer swimming programs, cultural arts programs, ice skating, gymnastics and a selection of other programs, we have sought out other districts to supplement our recreation offerings to you.

Rolling Meadows Park District

Salt Creek Residents may enjoy resident rates at Rolling Meadows Park District for the following programs:

- Fitness Center
- Swimming Pool Passes
- Ice skating lessons
- Figure Skating
- Gymnastics
- Swim Lessons
- Ice Hockey
- Selected Recreation Programs

For more information please contact (847) 818-3200.


 **Rolling Meadows Park District Residents**
May enjoy selected recreational programs, golf programs, green fees & fishing & boating at resident rates at Salt Creek facilities. (Must present valid driver's license)

Arlington Heights Park District

Salt Creek Residents may enjoy resident rates at Arlington Heights Park District for the following programs:

- Swimming Pool Passes
- Swim Lessons
- Swim Programs
- Cultural Arts Programs
- Recreation Programs

Salt Creek Rural Park District residents are able to register for Arlington Heights programs at resident rates during the non-resident registration times. Contact the Arlington Heights Park District at 847-577-3000.


 **Arlington Heights Park District Residents**
May enjoy selected recreational programs, fishing, boating & green fees (not golf classes or leagues) at resident rates at Salt Creek facilities. (Must present valid driver's license)

Palatine Park District

Salt Creek residents will receive resident rates at Palatine Park District for the following programs:

- Swimming Pool Passes
- Swim Lessons
- Swim Programs

For more information on these reciprocal programs, please call Palatine Park District at 847-991-0333.

 **Palatine Park District Residents**
May enjoy selected recreational programs, fishing & boating at resident rates at Salt Creek facilities. (Must present valid driver's license)

Like us on Facebook.
Follow us on Instagram!



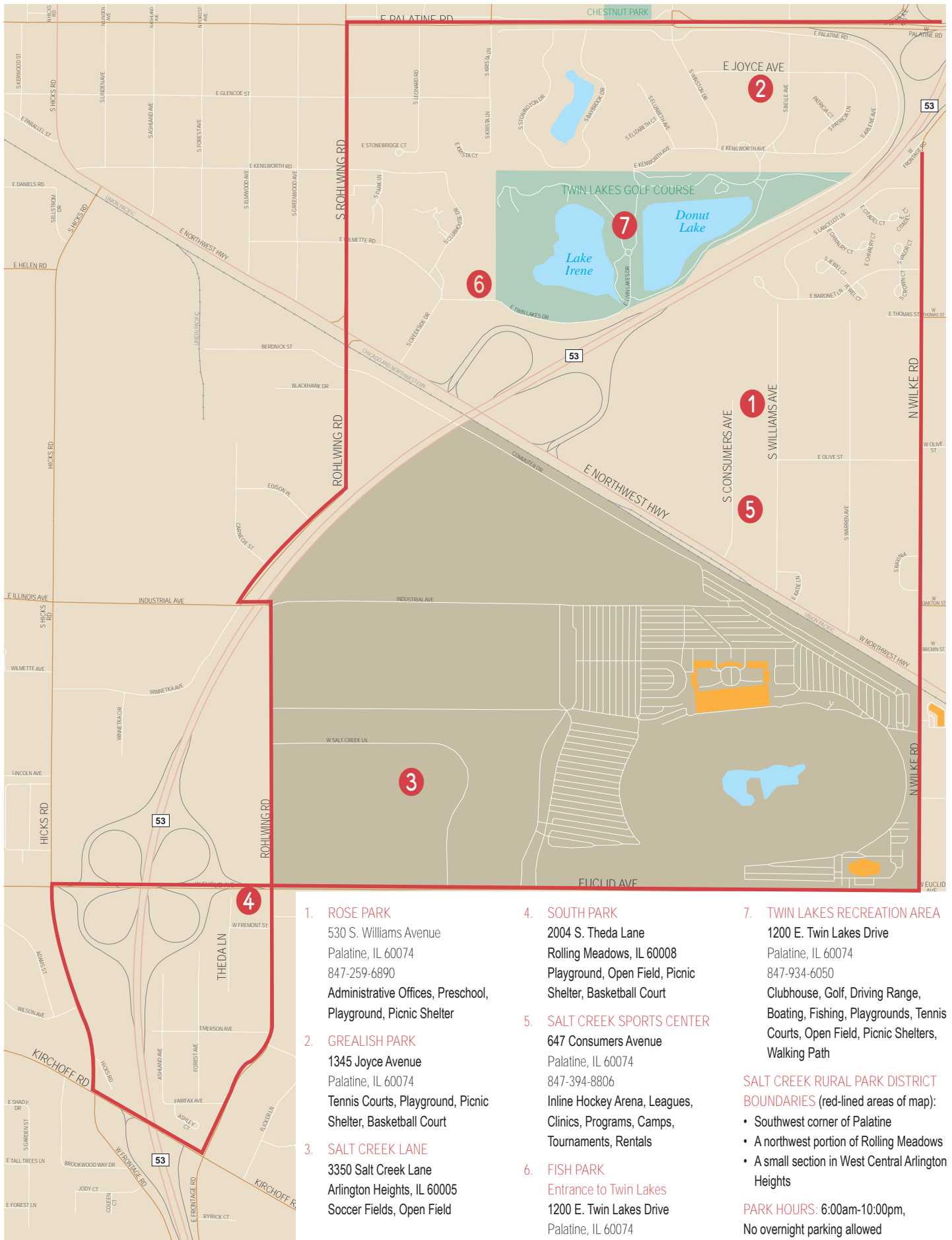
GIVE THE GIFT OF FUN!

Gift Cards can be purchased at Twin Lakes or at saltcreekpd.com and can be used for any park district program or at any facility. Some exclusions may apply.





PARK MAP & LOCATIONS





Salt Creek Rural Park District
530 South Williams Avenue, Palatine, IL 60074
847-259-6890 saltcreekpd.com

PRSRT STD
US POSTAGE PAID
Permit No. 2829
Palatine P&DC, IL



PALATINE BANK & TRUST*

AWINTRUST COMMUNITY BANK

988 E. Dundee Rd. | 110 W. Palatine Rd. | Palatine
847-963-0047 | palatinebank.com



WE ARE PROUD
TO SPONSOR
SALT CREEK PARK DISTRICT

Palatine Bank and Trust is a branch of
Barrington Bank & Trust Company, N.A.

MEMBER
FDIC



Our efforts come in a variety of forms, from financial investments to support economic growth to traditional philanthropy and volunteer hours contributed by our team members. We strive to provide community banking as it should be.